



Photo 33. Above: Young trees of *Pinus uncinata* subsp. *uncinata* var. *ancestralis* on a seasonally inundated alluvium of limestone screes at 1250 m in upper Wimbachtal valley (Berchtesgaden, SE Oberbayern) with background of west precipices of the Watzmann massif. Below: A group of old monocormic trees about 10 m high of the same pine on old overgrown scree alluvium at the same locality. (16 Sept. 2007).





Photo 34. Growth of *Pinus uncinata* subsp. *uncinata* var. *ancestralis* on old overgrown alluvium of limestone screes at 1200 m in foot of SE precipices of the Hochkalterer massif in upper Wimbachtral valley (Berchtesgaden, SE Oberbayern); old trees are monocormic, young individuals in foreground growing along a border edge of the old alluvium have usually not yet developed the leading shoot. (16 Sept. 2007).



Photo 35. Typically sparse growth of *Pinus merkusii* subsp. *usulata* at about 350 m on hills SE of Santa Cruz on the west of Mindoro island (Philippines); these mature trees are about 15 m high (17 Apr. 2000).



Photo 36. Sparse growth of *Pinus merkusii* subsp. *ustulata* on flat ridge at 450 m on hills SE of Santa Cruz on the west of Mindoro island (Philippines), where frequent fires eliminate occurrence of broad-leaved woody plants and only this pine and perennial grasses resist (17 Apr. 2000).



Photo 37. South view from an altitude of 3300 m on eastern slopes of Cerro Potosí in Nuevo León (Mexico); in foreground is the growth of *Pinus stylisii*, lower in background a wood of predominant *P. hartwegii* (16 Feb. 2007).

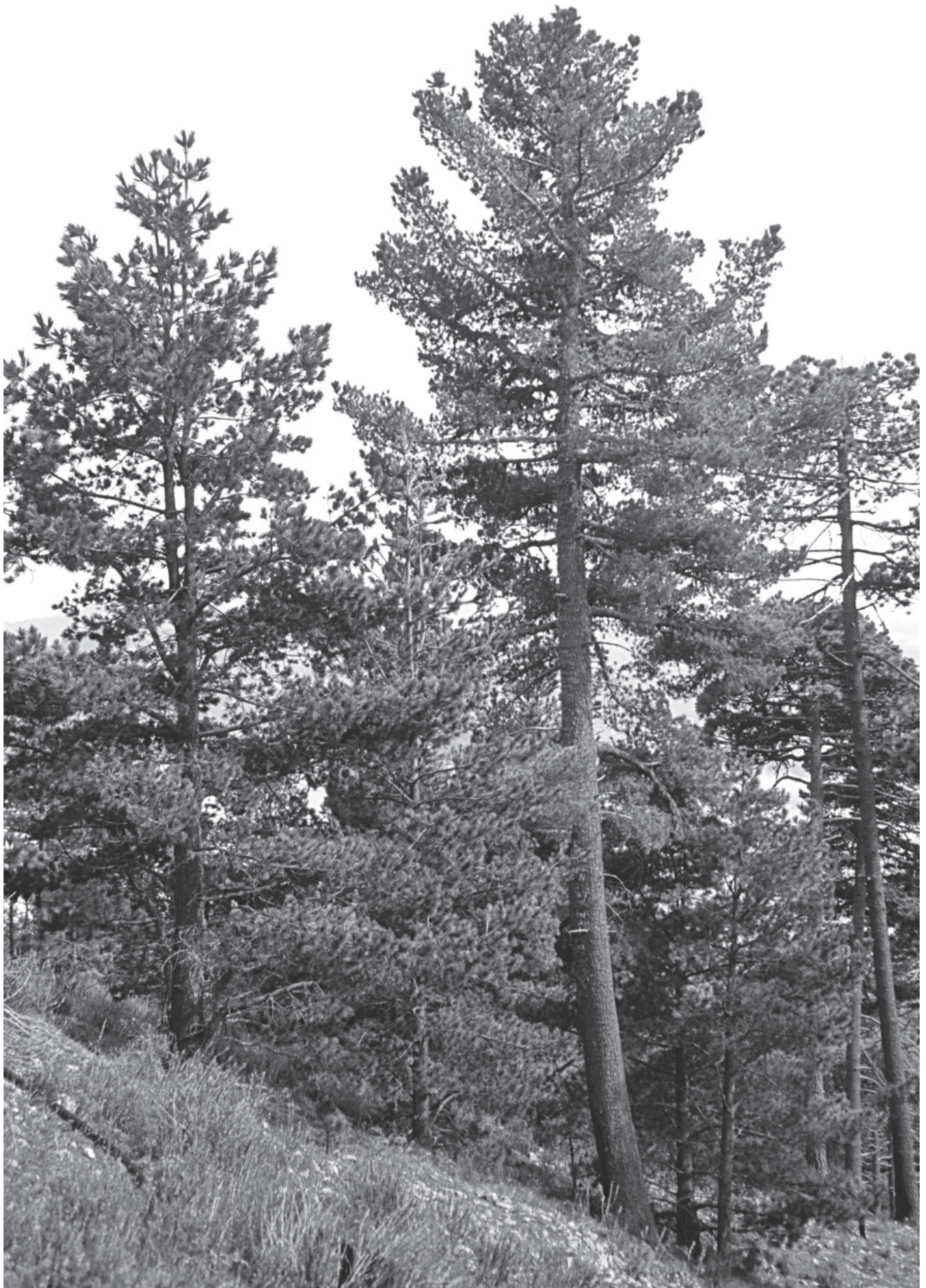


Photo 38. Group of *Pinus stilesii* trees of various age at 3300 m on eastern slope of Cerro Potosí in Nuevo León (Mexico); trees in the right background are *P. hartwegii* (16 Feb. 2007).



Photo 39. Three views into a growth of *Pinus nigra* subsp. *pallasiana* var. *fastigiata* in the type natural population between 1050 and 1250 m near the Vakif village between towns Tavşanlı and Kütahya (Kütahya Prov., Turkey; 25 May 2005).





Photo 40. The author of drawings, Ludmila Businská, in the field camp in a mountain jungle at the locality of *Pinus eremitana* in northern Vietnam (Photo: Roman Businský, 3 Feb. 1994).



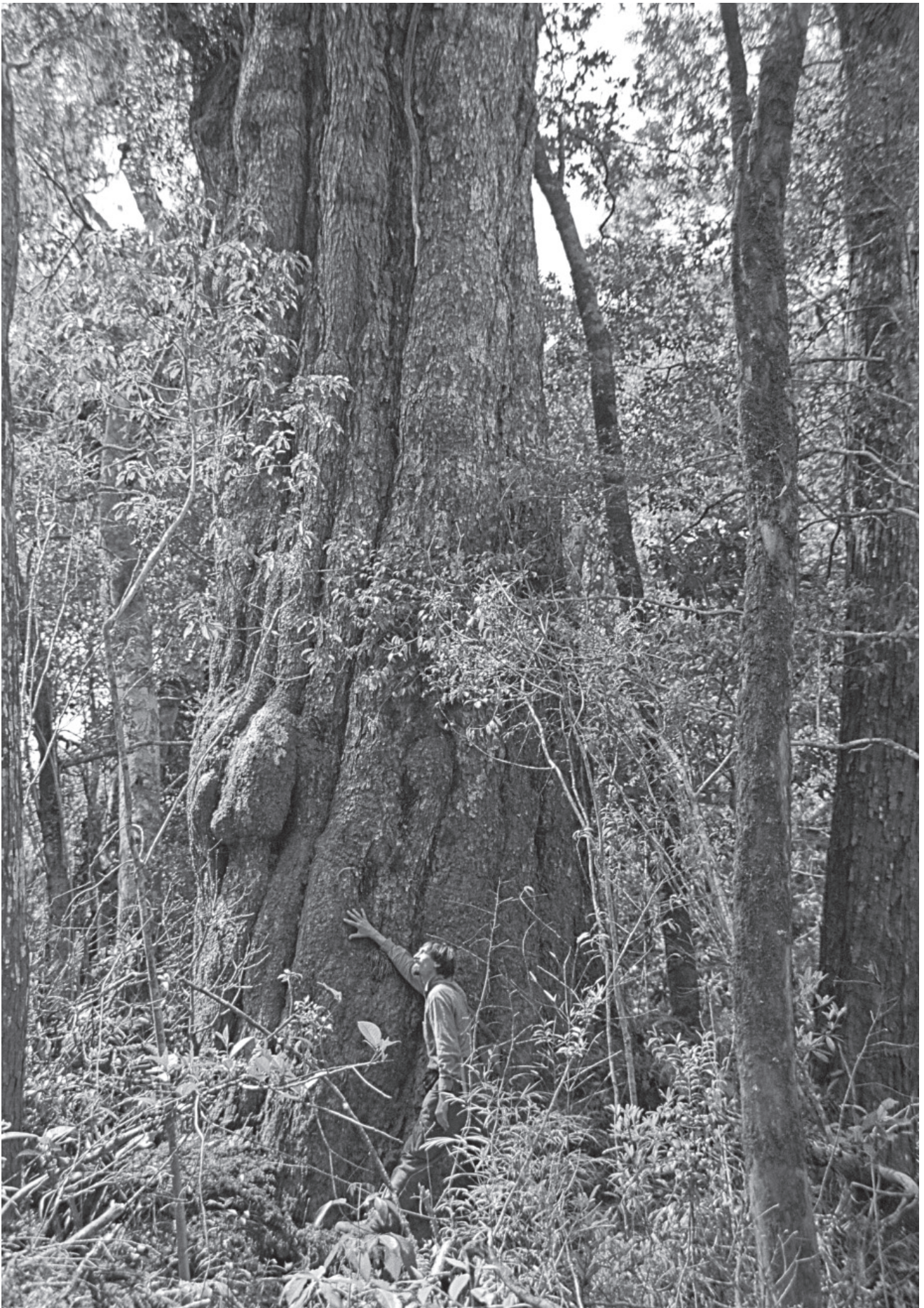


Photo 41. The author at the trunk of an impressive tree of *Pinus krempfi* with 820 cm trunk circumference, 28 m h. and 23–28 m broad crown (alt. 1900 m, Bi Doup mt. region, Lam Dong Prov., S Vietnam; Photo: Ludmila Businská, 14 Feb. 1994).

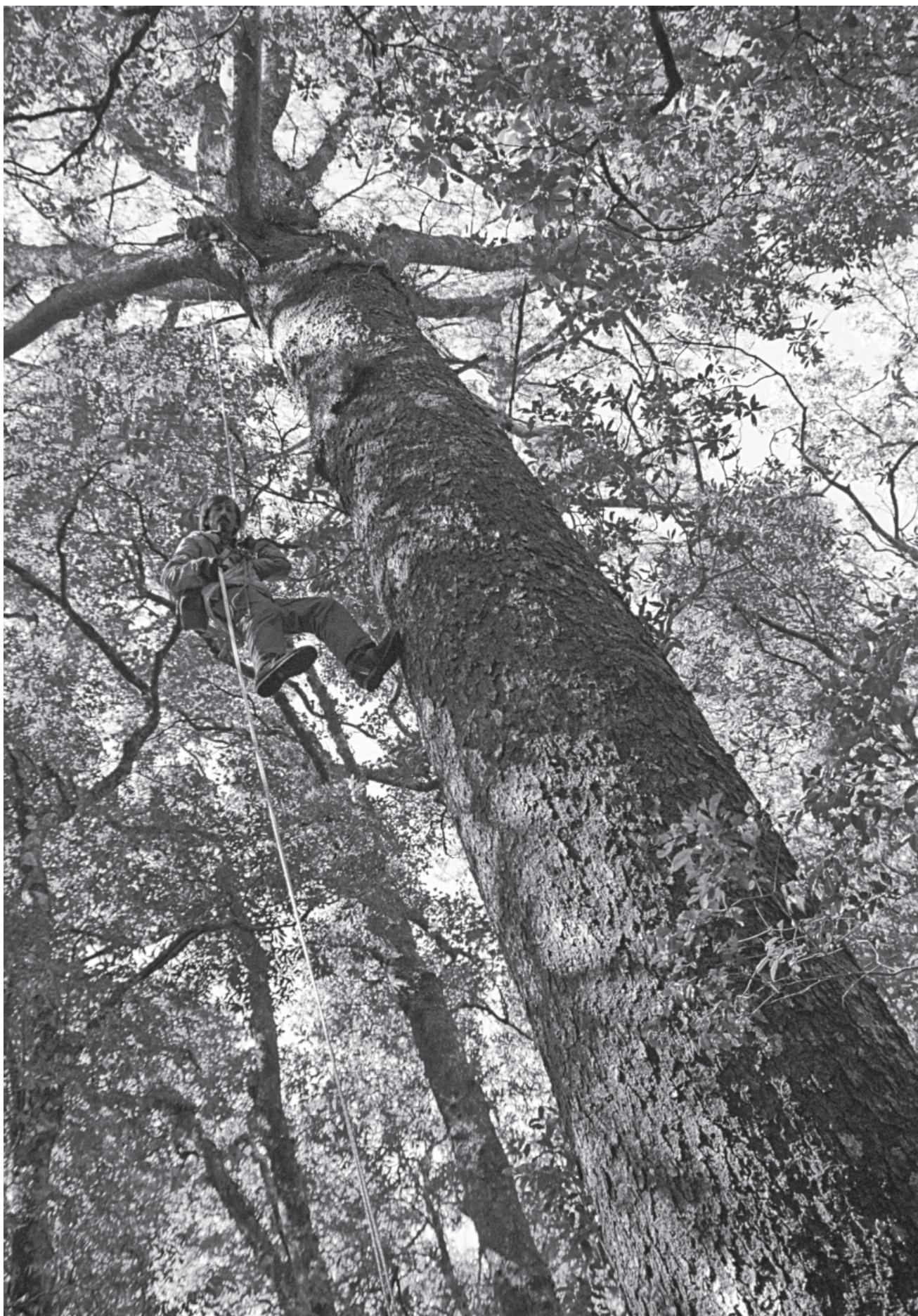


Photo 42. The author in the Ngoc Linh Mountains in southern Vietnam during a descent from an old tree of *Pinus dalatensis* subsp. *procera* with a trunk diameter of 110 cm, later selected as the type. (Photo: Ludmila Businská, 27 Jan. 1997).