

Fig. 1 1st Austrian Military Survey in the scale 1 : 28 800 (1763), Section No. 39 Mähren, Olomouc and surroundings



Fig 2. 2nd Austrian Military Survey in the scale 1 : 28 800 (1846), Section No. W 6 III Böhmen, Žatec and surroundings



Fig. 3 3rd Austrian Military Survey, Section 3853/1 in the scale 1 : 25 000 (1876), Mělník and surroundings

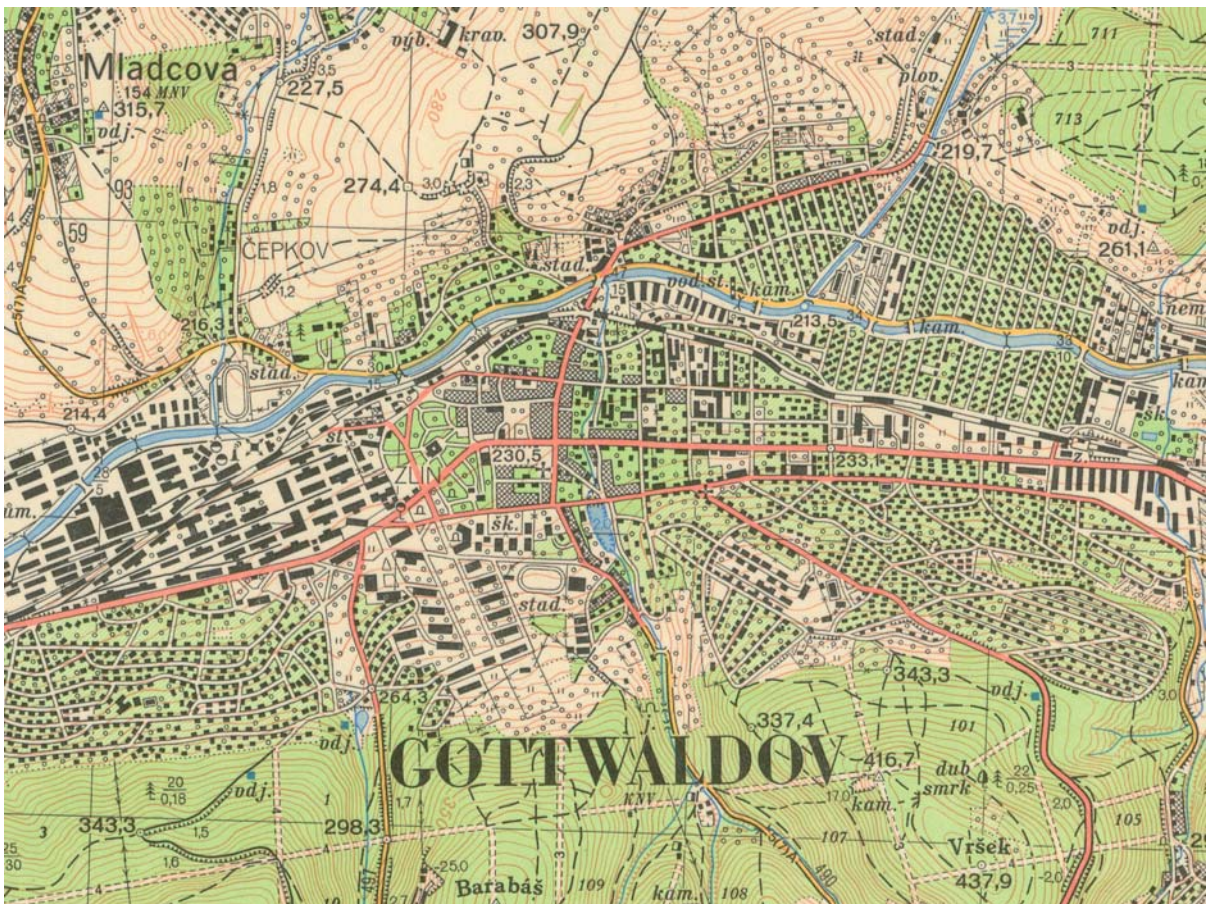


Fig. 4 Czechoslovak military survey in the scale 1 : 25 000 (1956), Section M-33-108-A-d, Zlín and surroundings



Fig. 5 Czechoslovak military survey in the scale 1 : 25 000 (1993), Section M-34-86-A-d, Dolní Lomná and surroundings

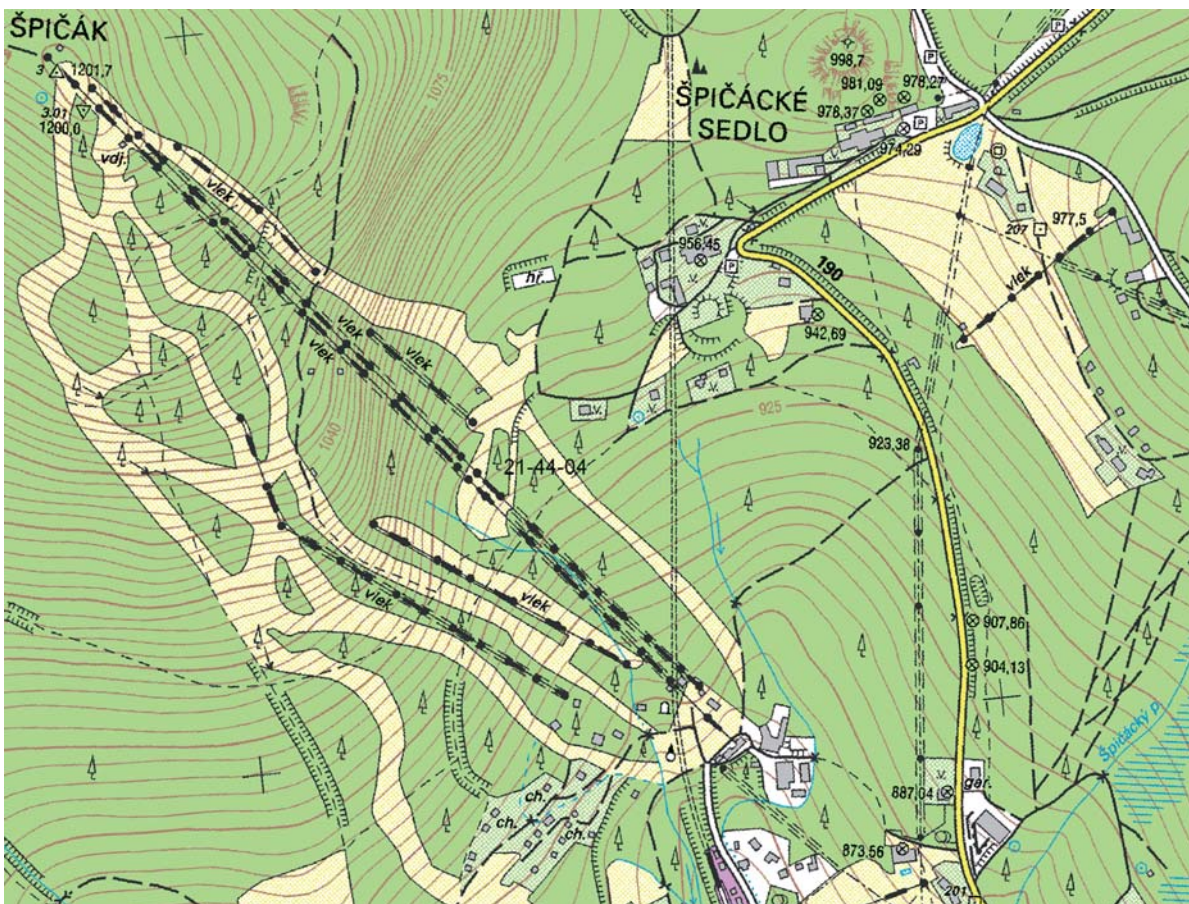


Fig. 6 Base map of the Czech Republic in the scale 1 : 10 000, Section 21-44-04 (2005), Špičák and surroundings

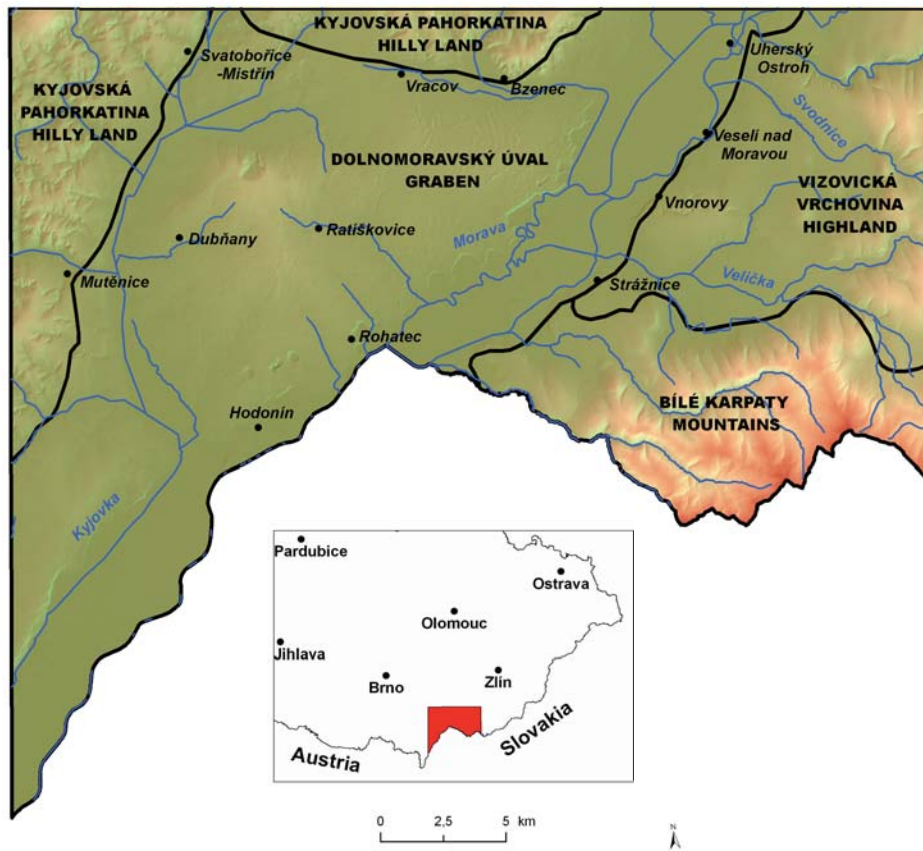


Fig. 1 Localisation of the study area within the territory of the Czech Republic

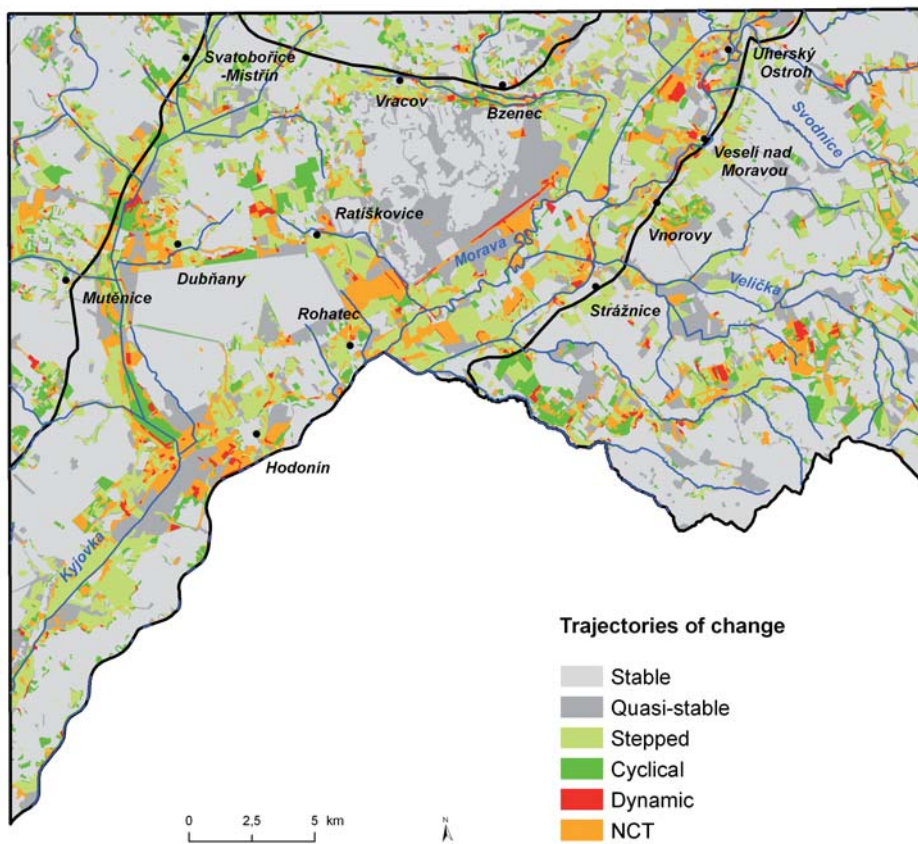


Fig. 2 Spatial distribution of land use change trajectories in the study region and its parts

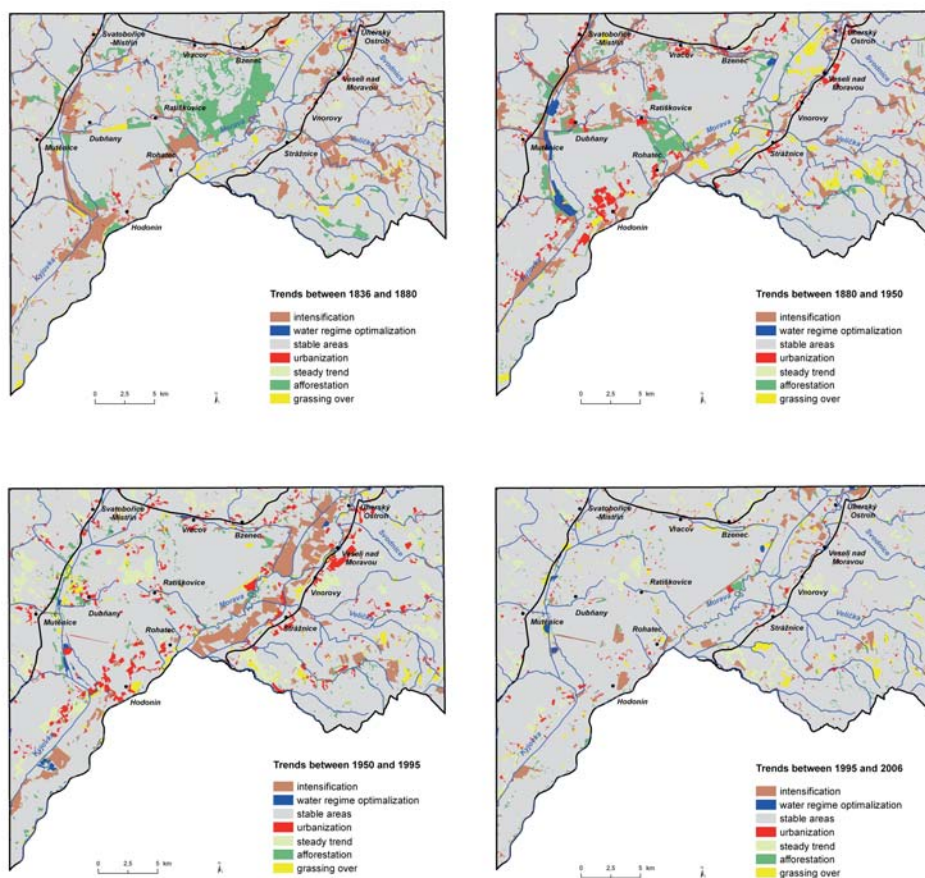


Fig. 3 Spatial distribution of processes occurring during the four periods in the study region and its parts

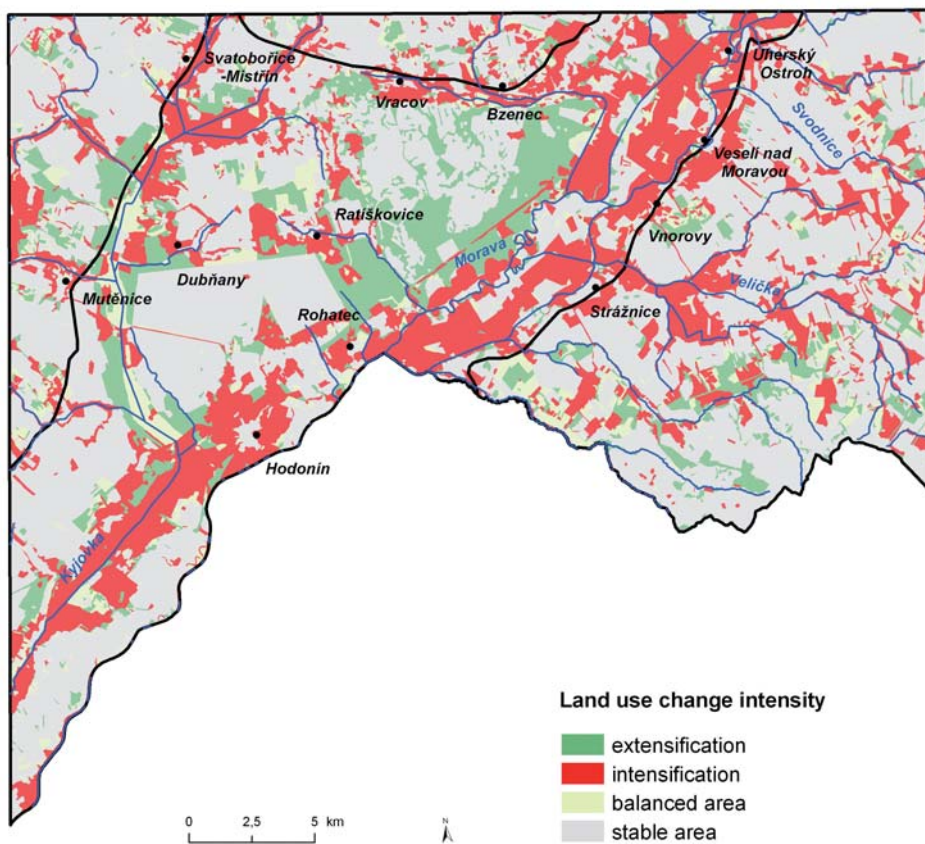


Fig. 4 Spatial distribution of land use change intensity in the study region and its parts

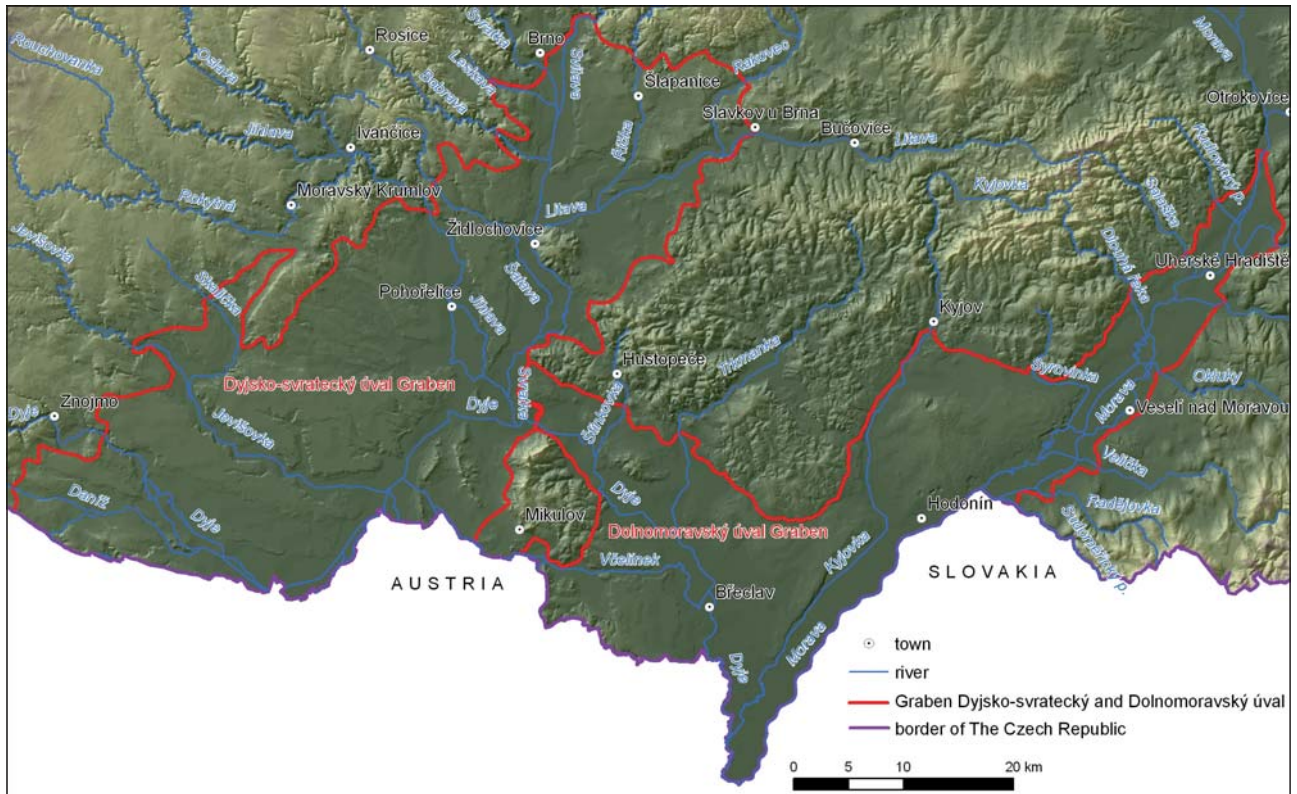


Fig. 1 Study area

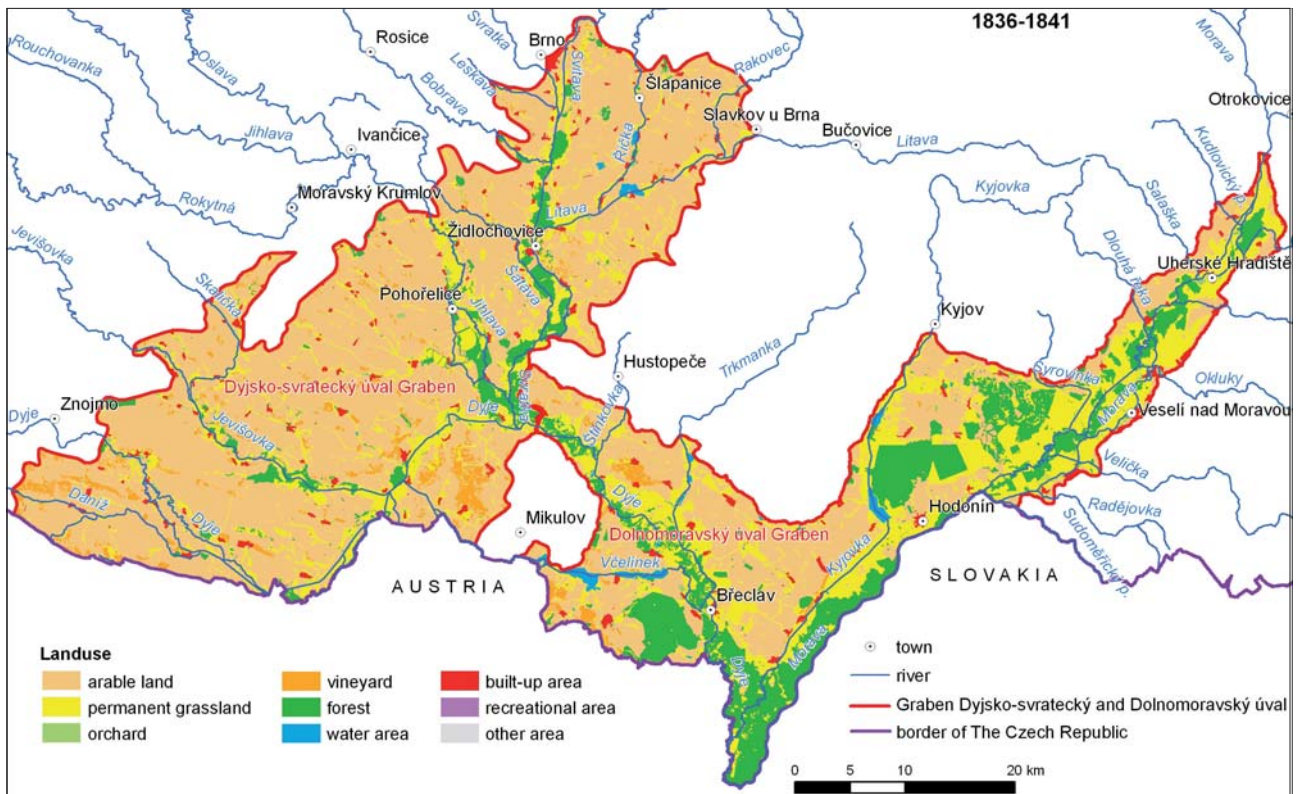


Fig. 2 Land-use in the study area around 1836–1841

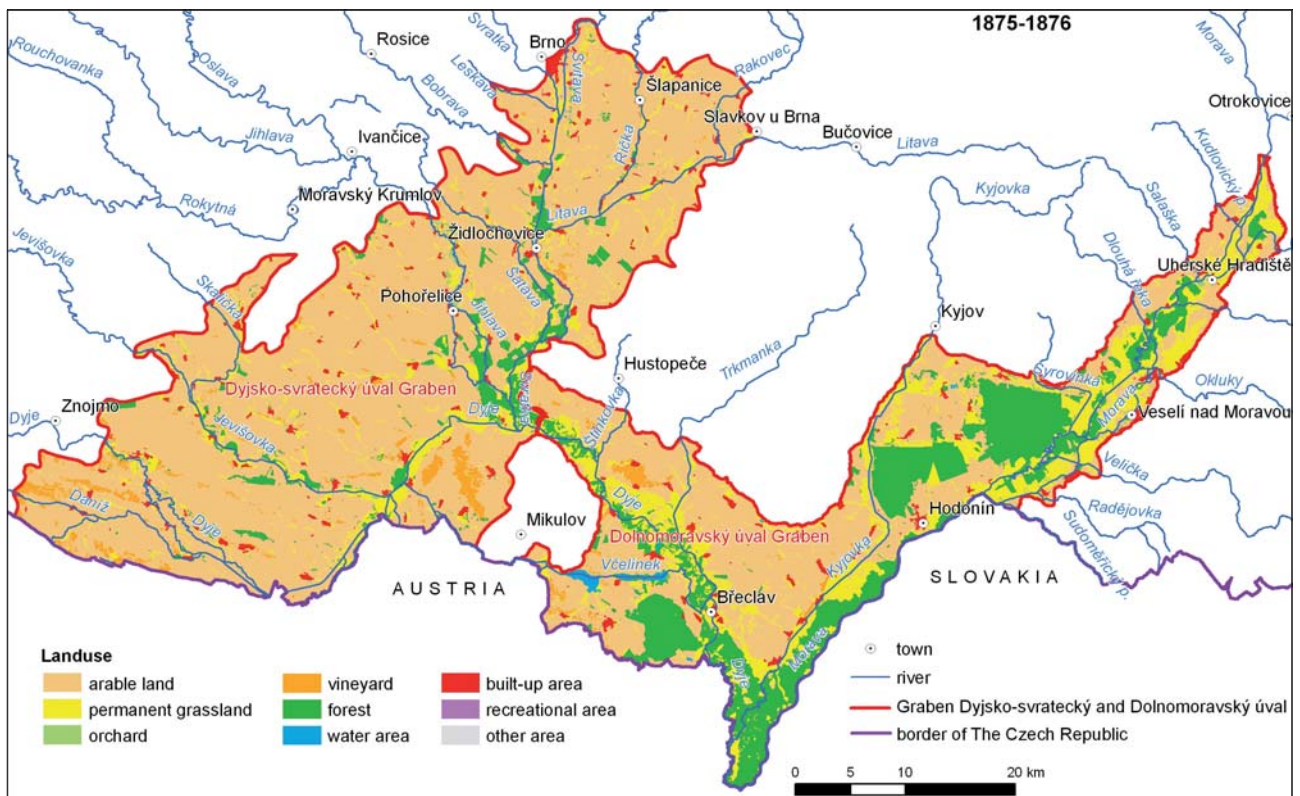


Fig. 3 Land-use in the study area around 1875–1876

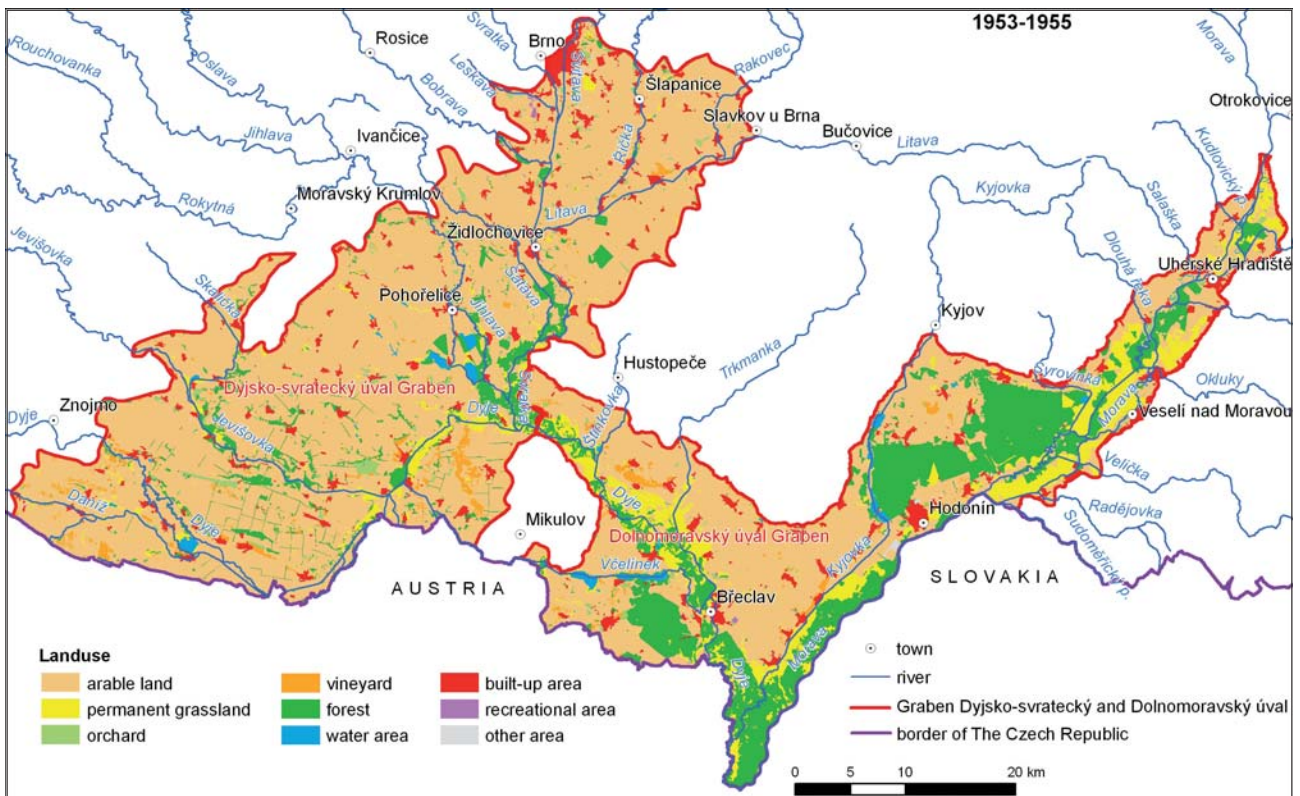


Fig. 4 Land-use in the study area around 1953–1955

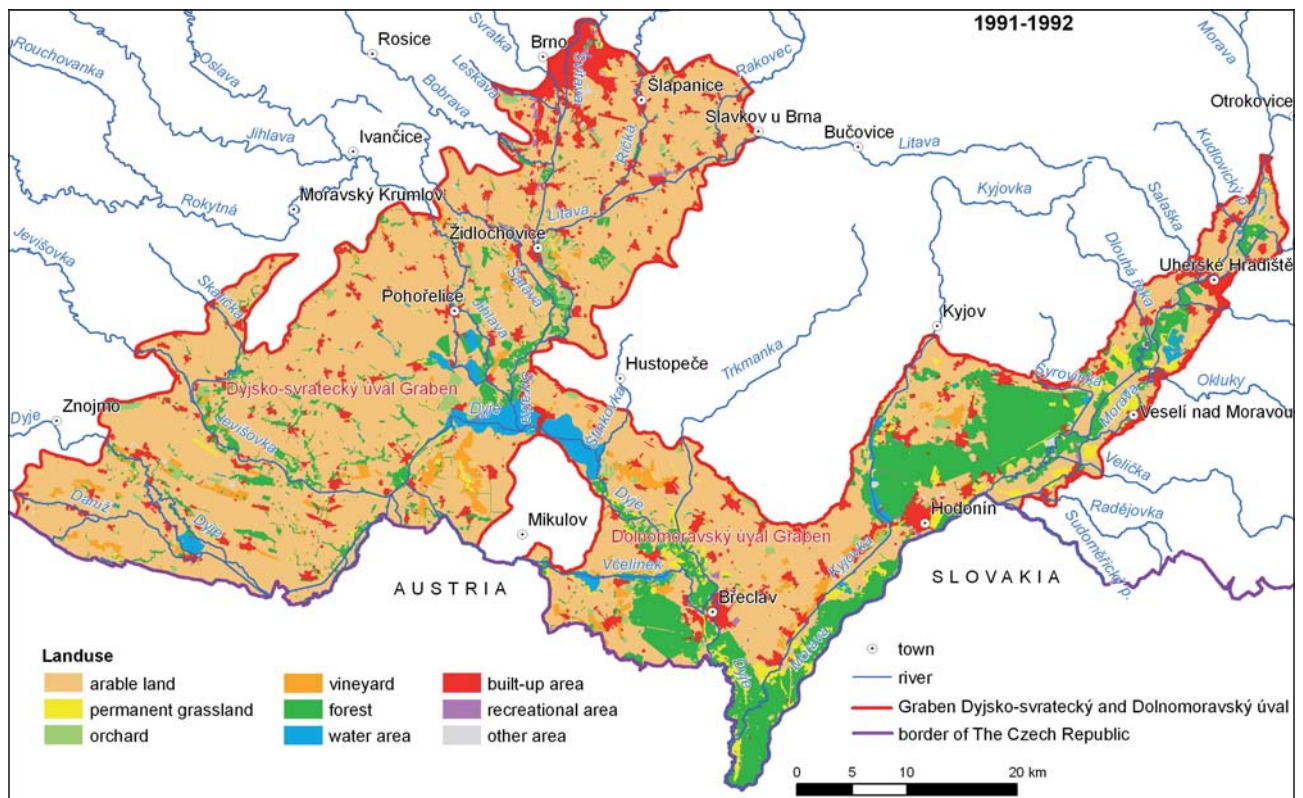


Fig. 5 Land-use in study area around 1991–1995

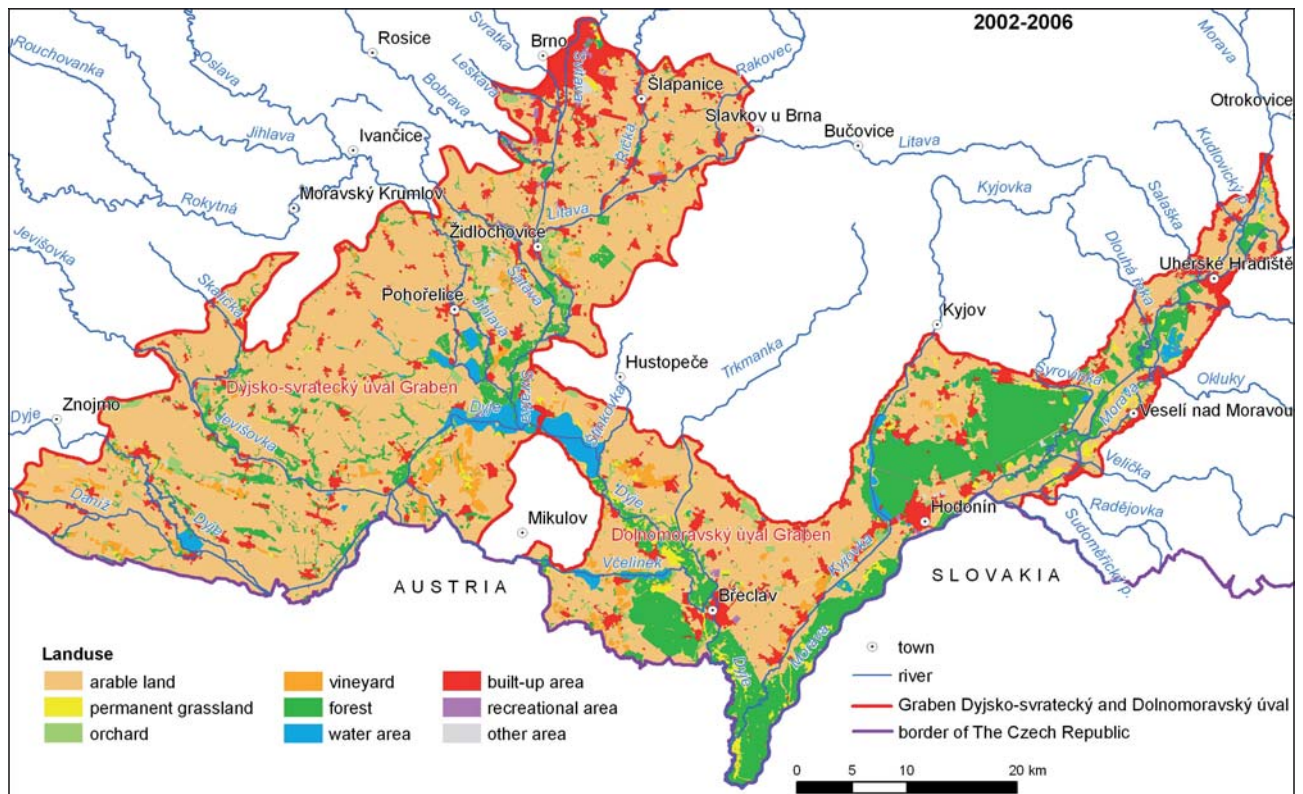


Fig. 6 Land-use in study area around 2002–2006

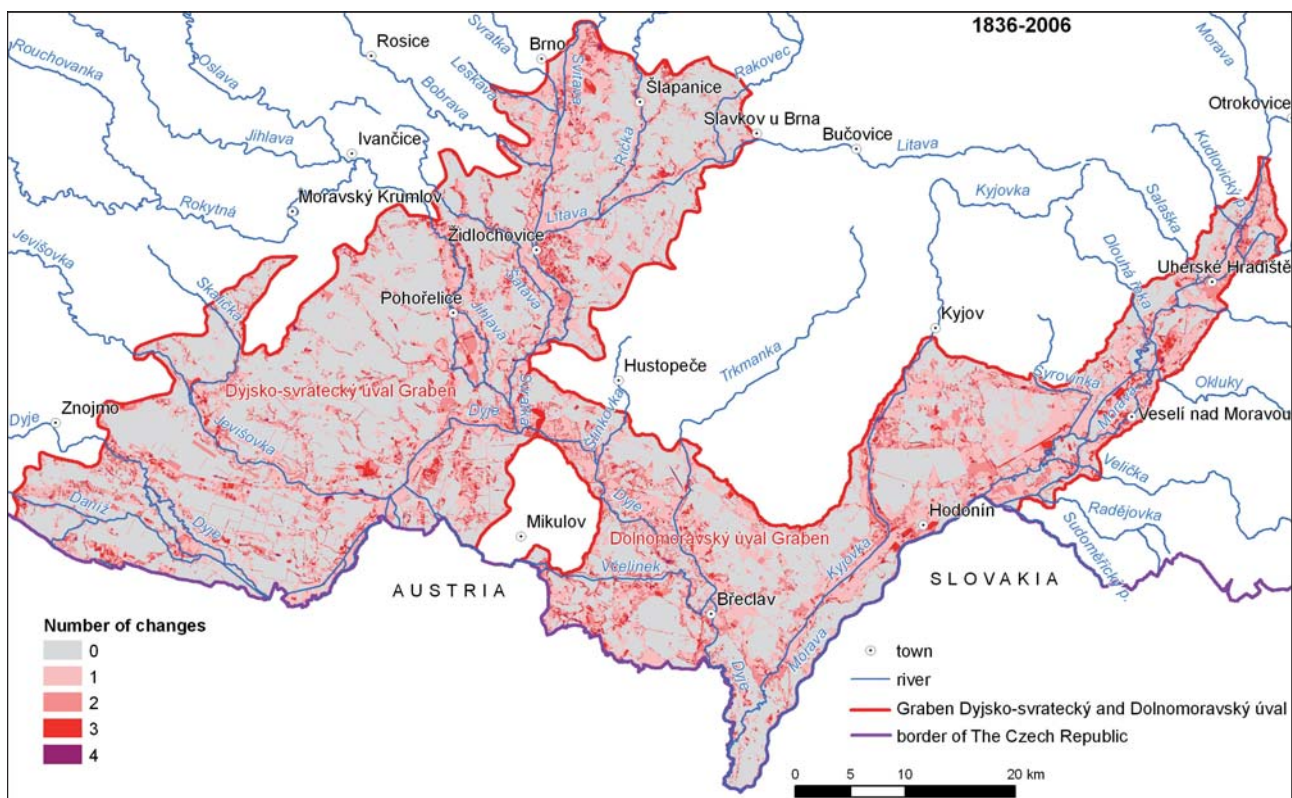


Fig. 7 Number of changes in land use in the study area in the period 1836–2006

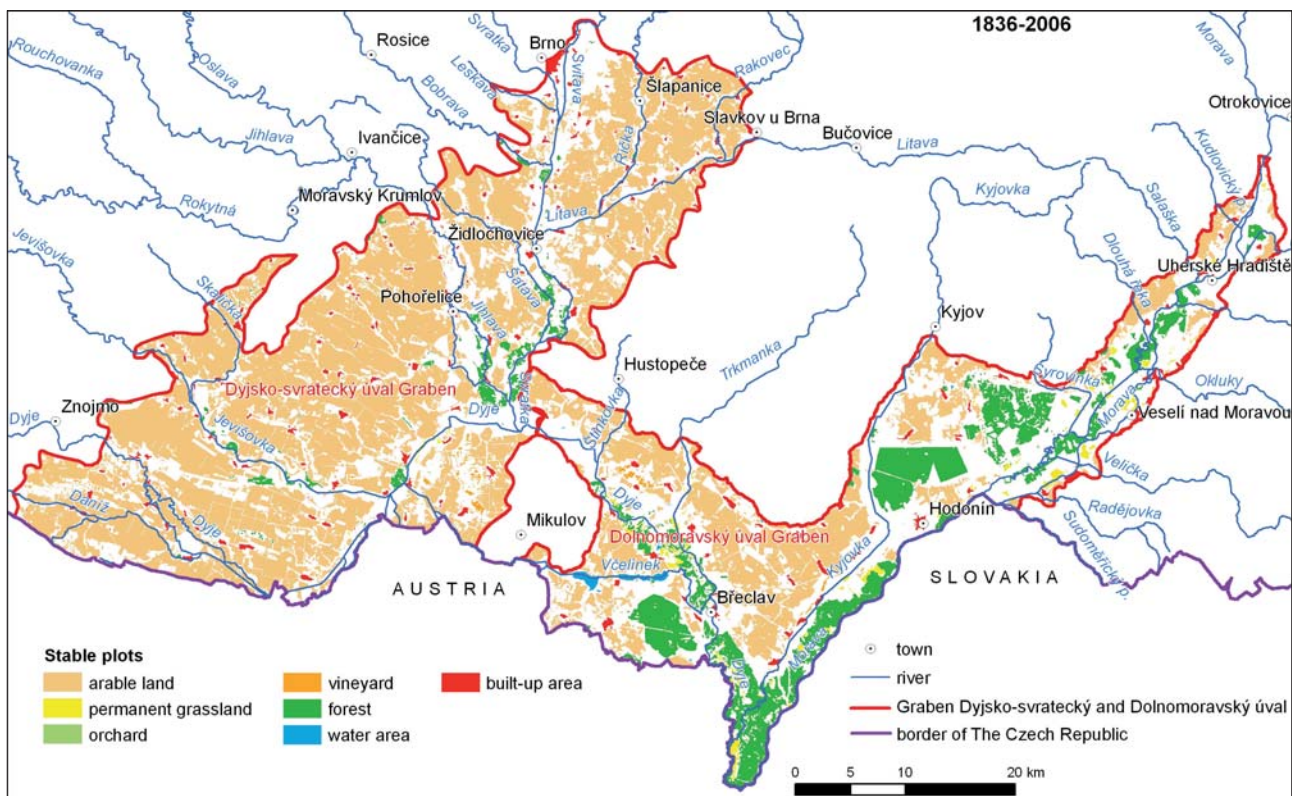


Fig. 8 Stable plots within the study area in the period 1836–2000

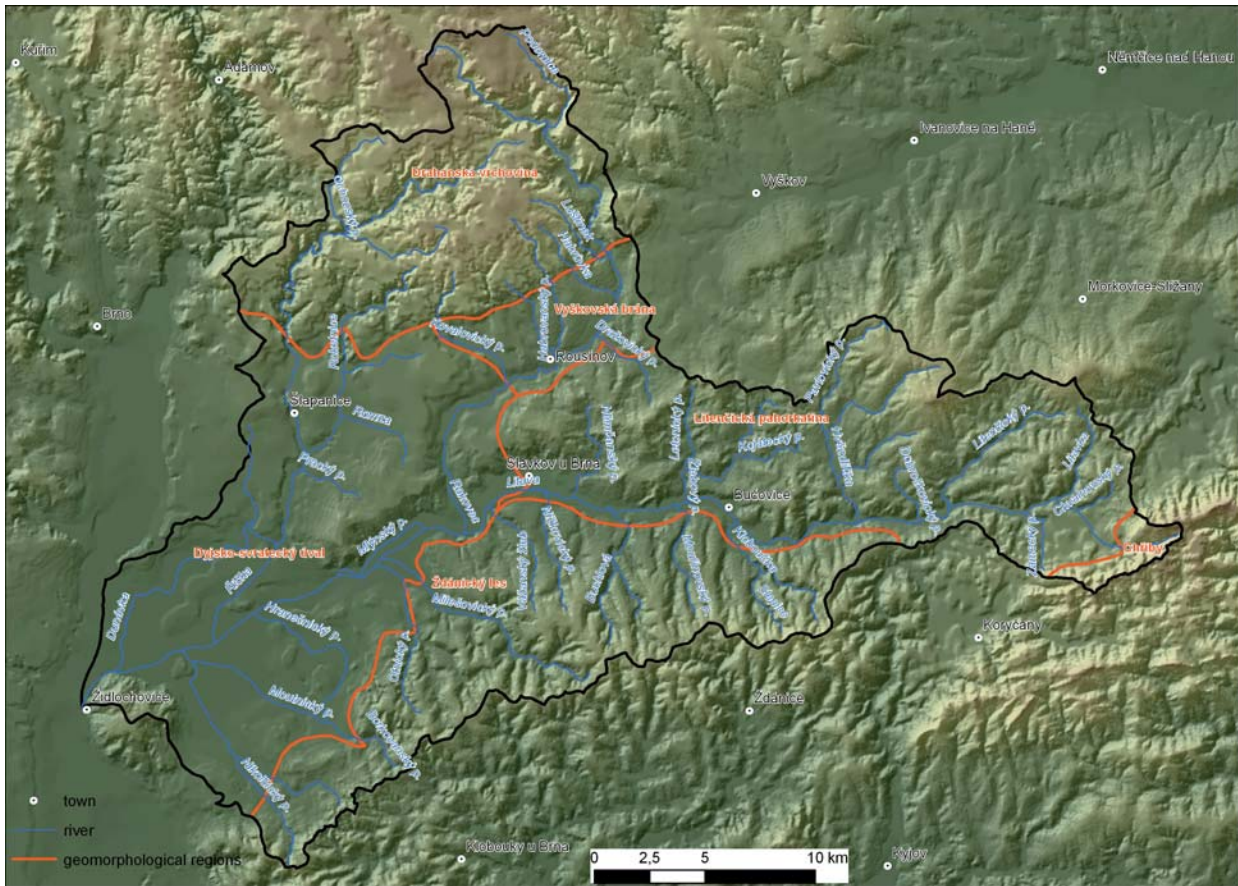


Fig. 1 Study area Litava River basin

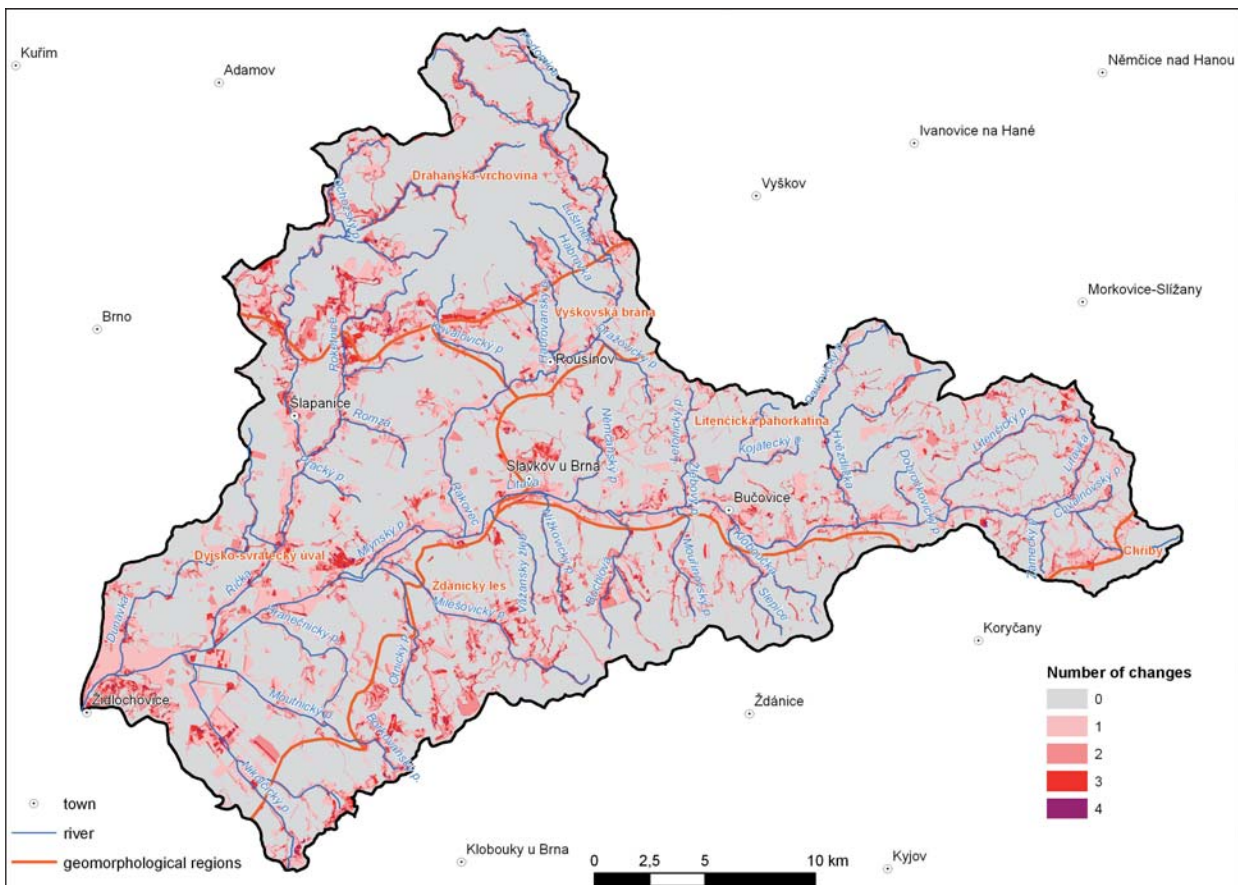


Fig. 2 Number of changes in land use in Litava River basin (1836–2006)

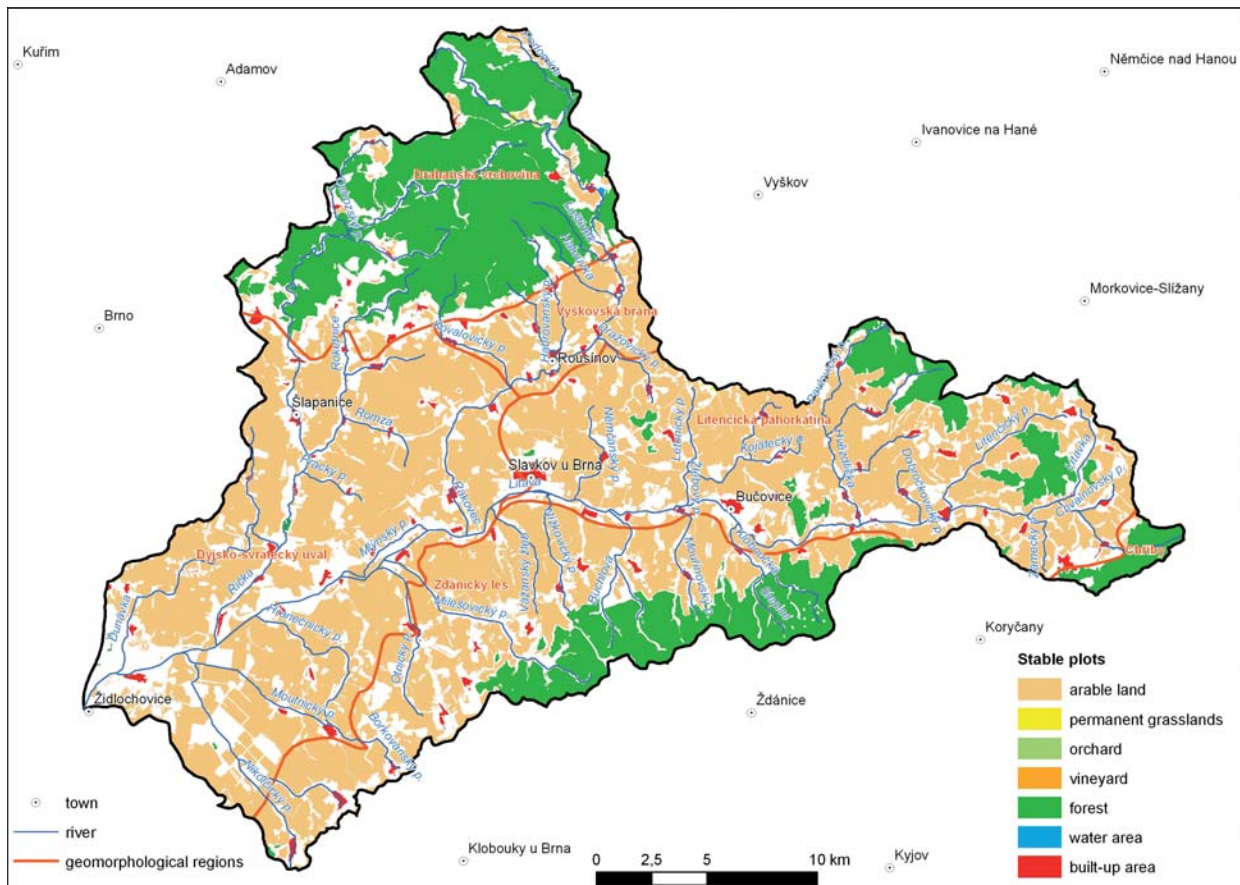


Fig. 3 Permanently used areas in Litava River basin (1836–2006)

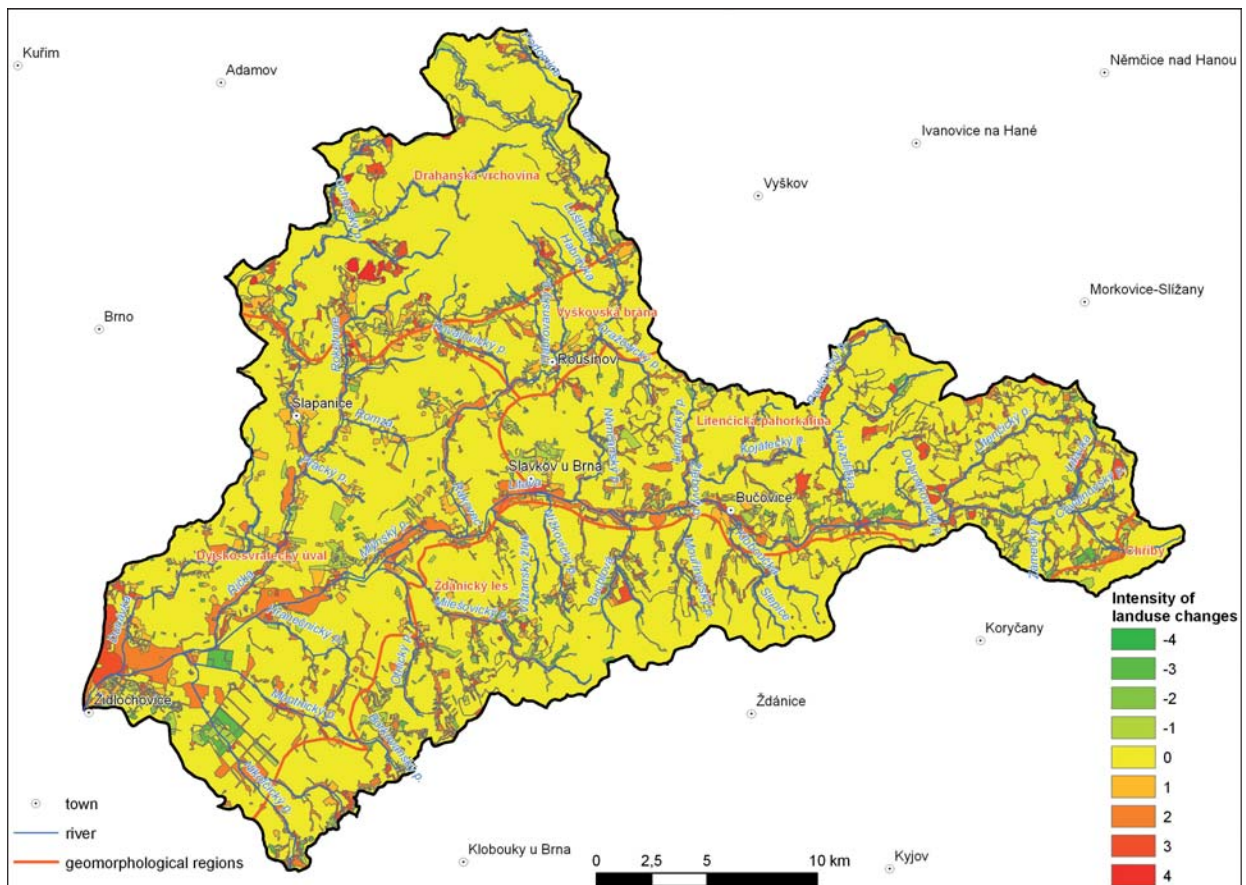


Fig. 4 Intensity changes in land use in Litava River basin (1836–2006)

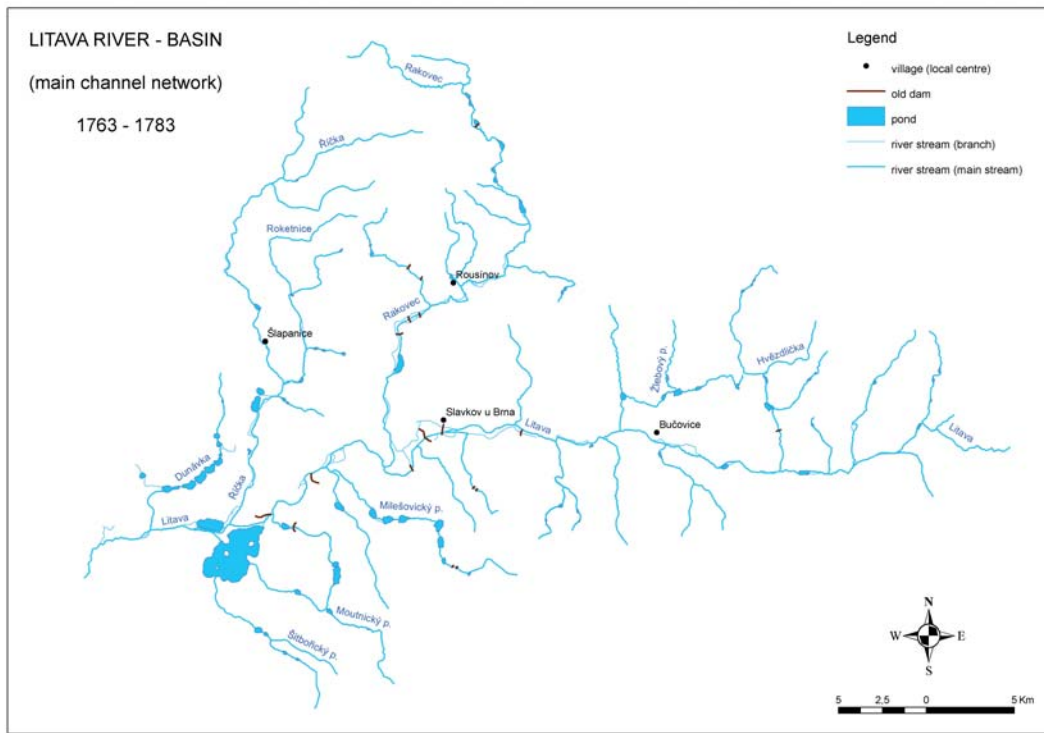


Fig 12 Backbone network of streams in maps of the 1st Austrian Military Survey (1763–1783)

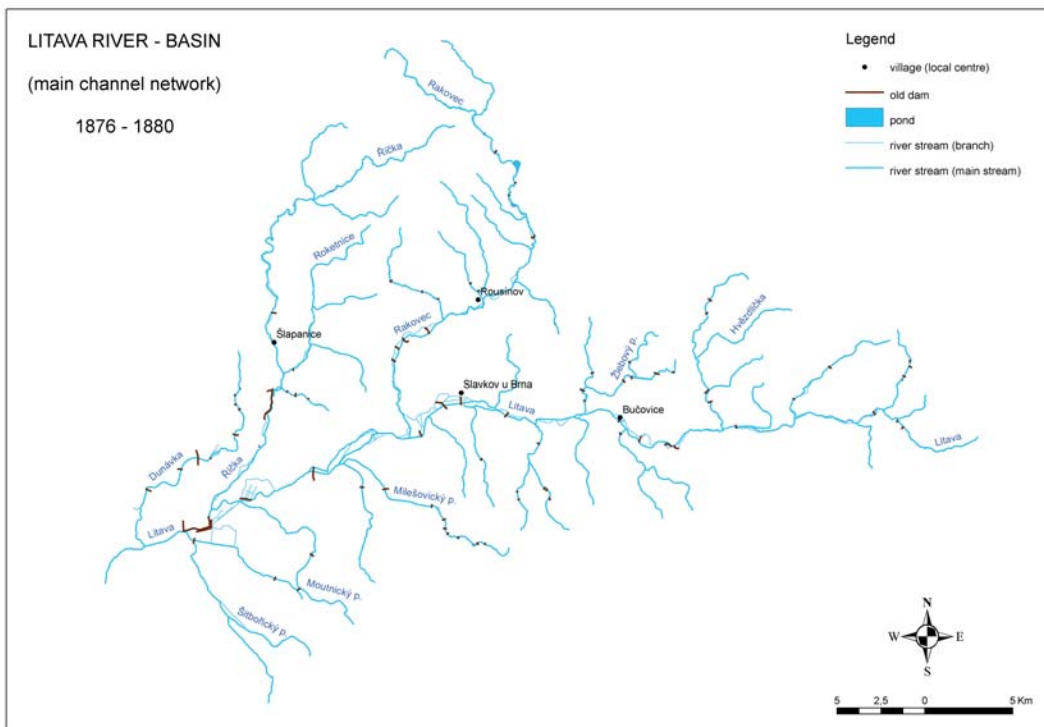


Fig. 13 Backbone network of streams in maps of the 3rd Austrian Military Survey (1876–1880)

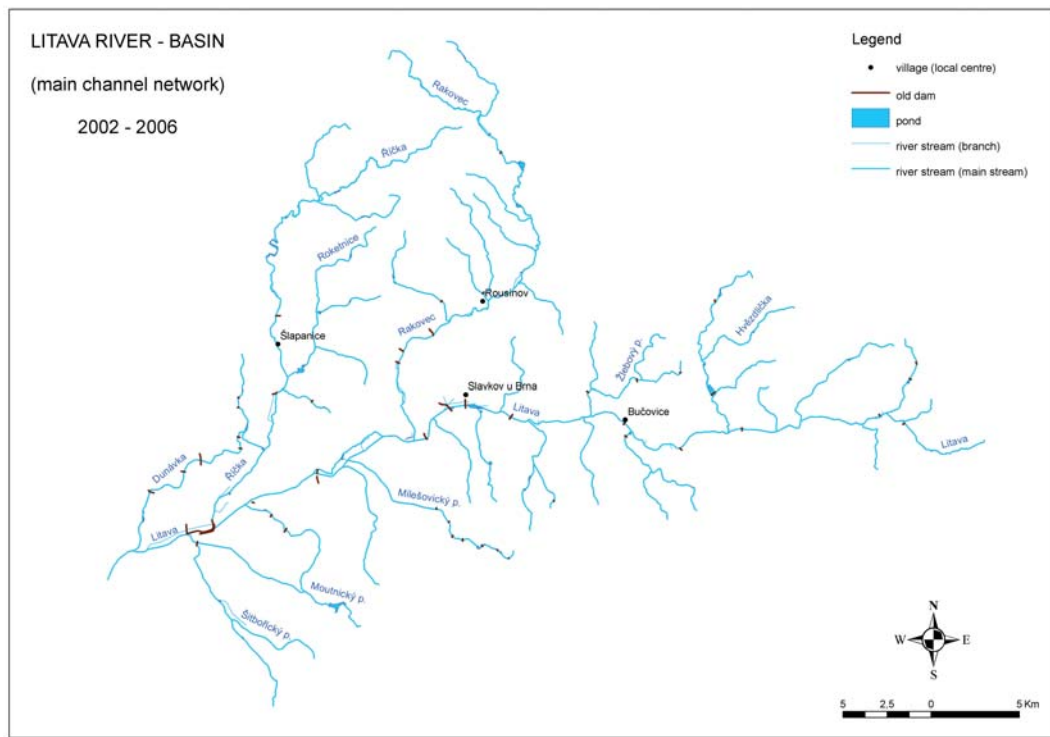


Fig. 14 Backbone network of streams in contemporary base maps (2002–2006)



Fig. 15 Měnitž pond at the time of the 1st Austrian Military Survey (1736–1783)

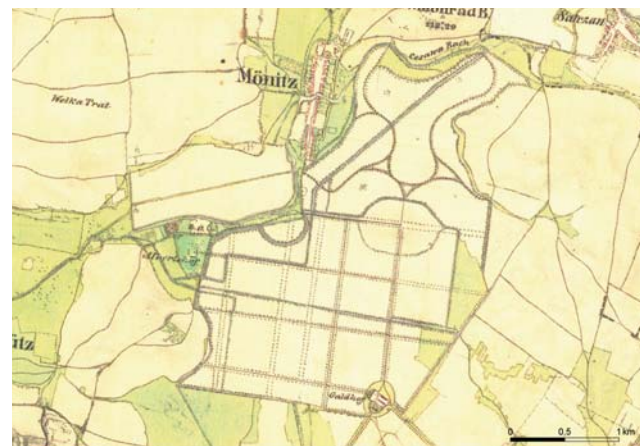


Fig. 16 Měnitž pond site at the time of the 2nd Austrian Military Survey (1836–1852)

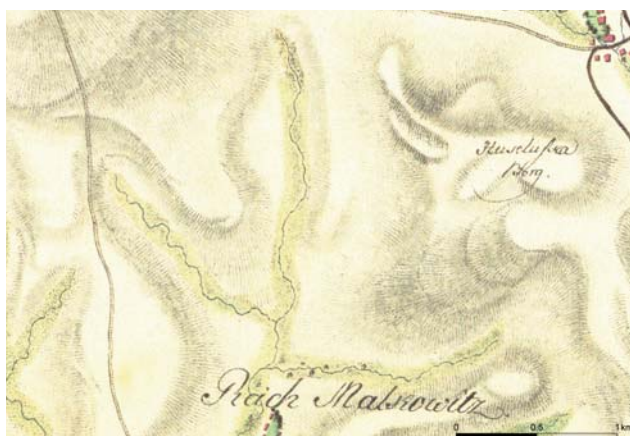


Fig. 17 Headwater area of the Žlebový Brook at the time of the 1st Austrian Military Survey (1736–1783); with respect to a considerable relief distortion, a greater resolution is used for comparability with Fig. 18

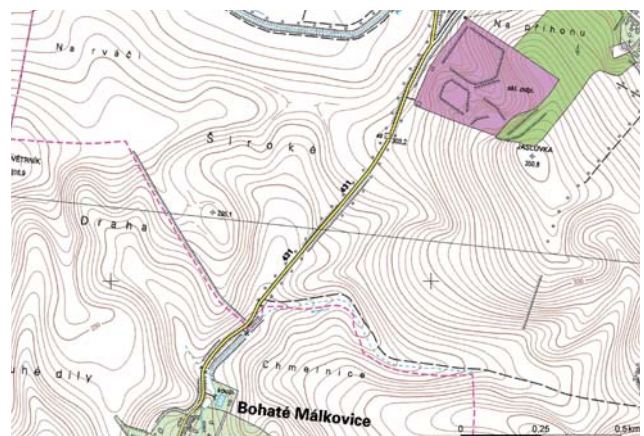


Fig. 18 Headwater area of the Žlebový Brook at the present time (2002–2006)

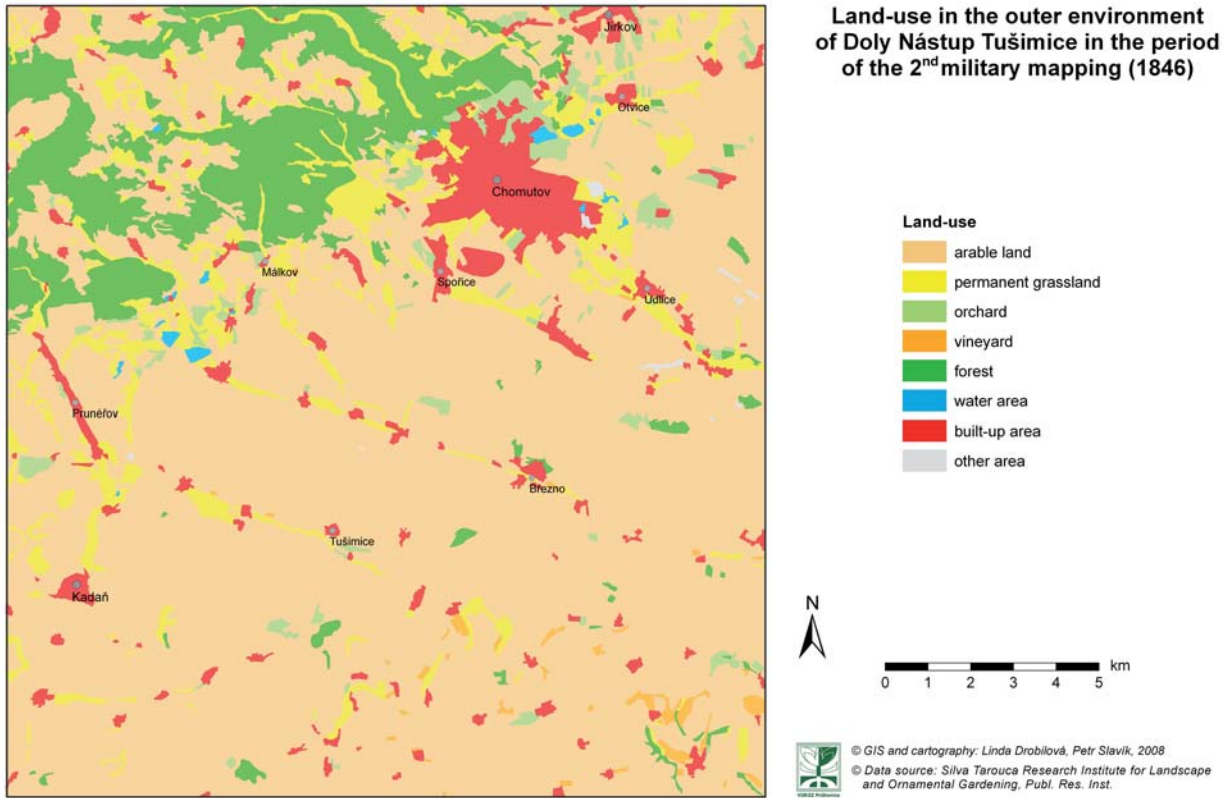


Fig. 1 Land-use in the outer environment of Doly Nástup Tušimice in the period of the 2nd military mapping (1846)

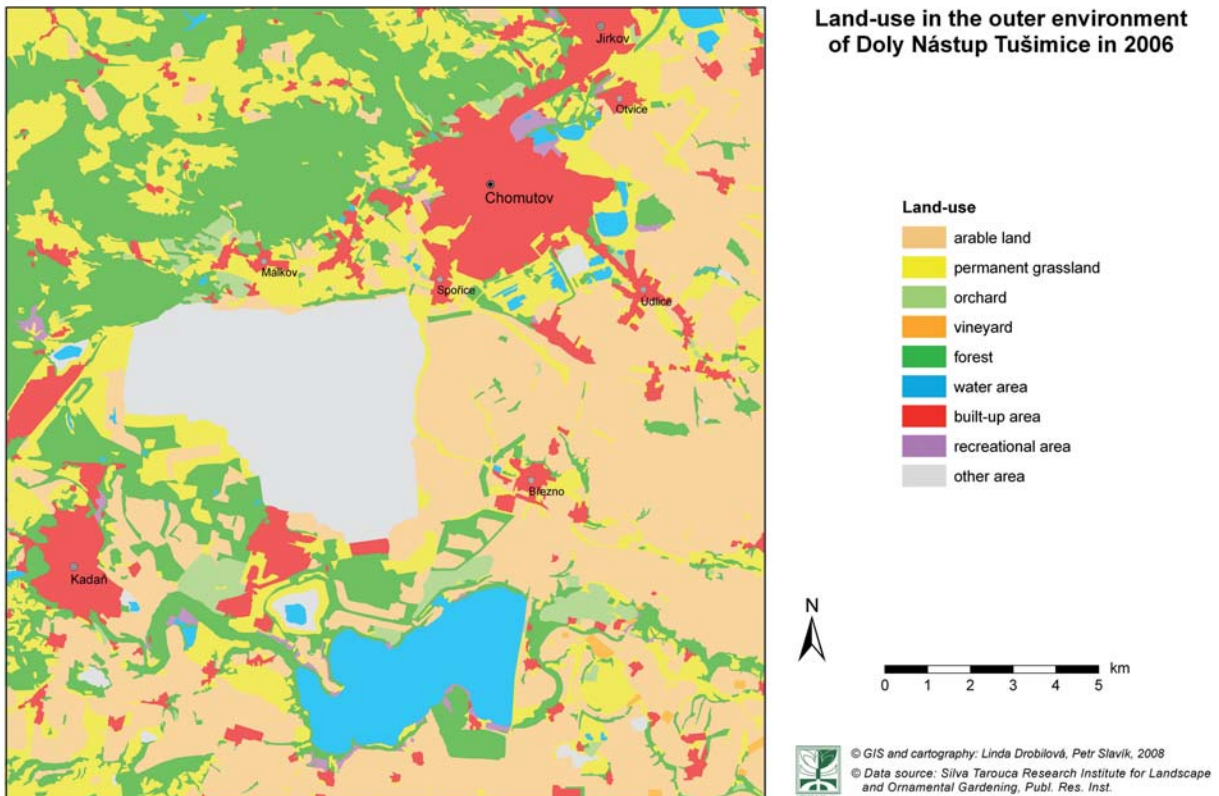


Fig. 2 Land-use in the outer environment of Doly Nástup Tušimice in 2006

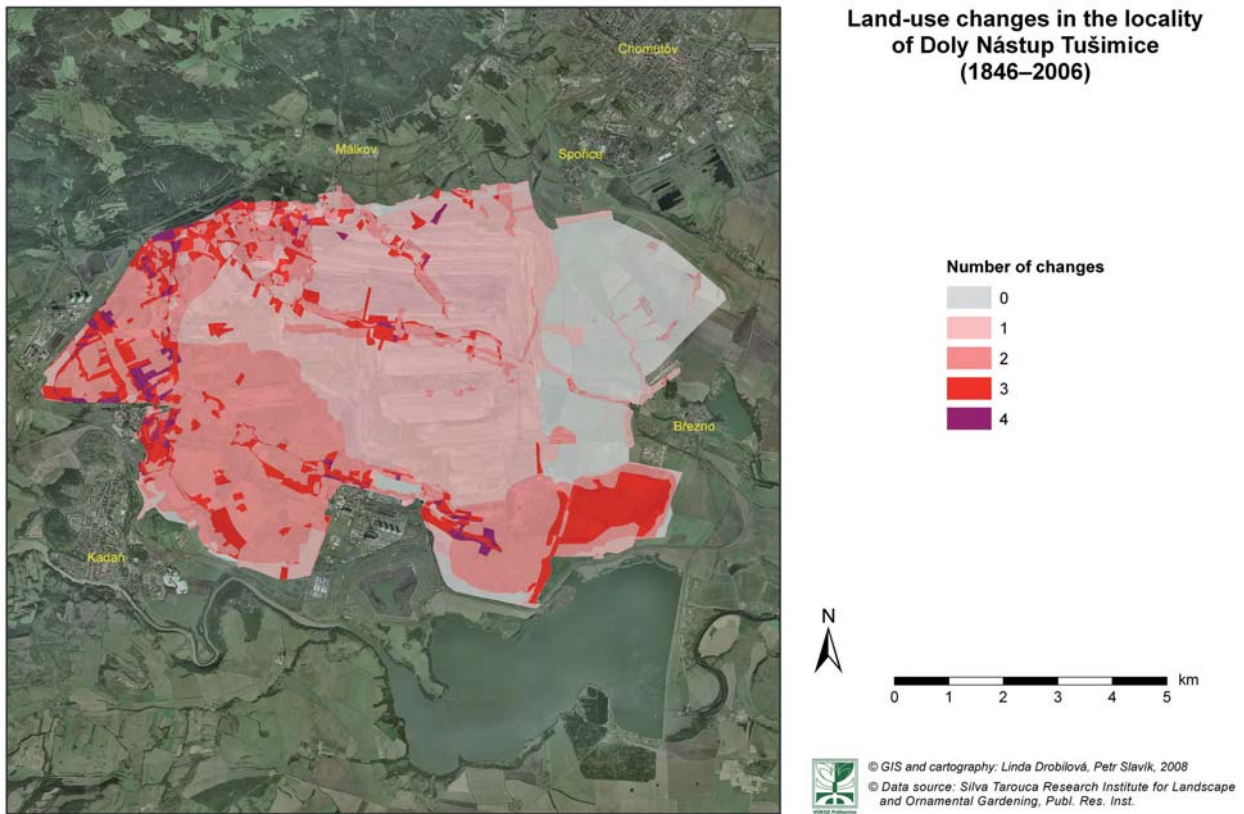


Fig. 3 Land-use changes in the locality of Doly Nástup Tušimice (1846–2006)

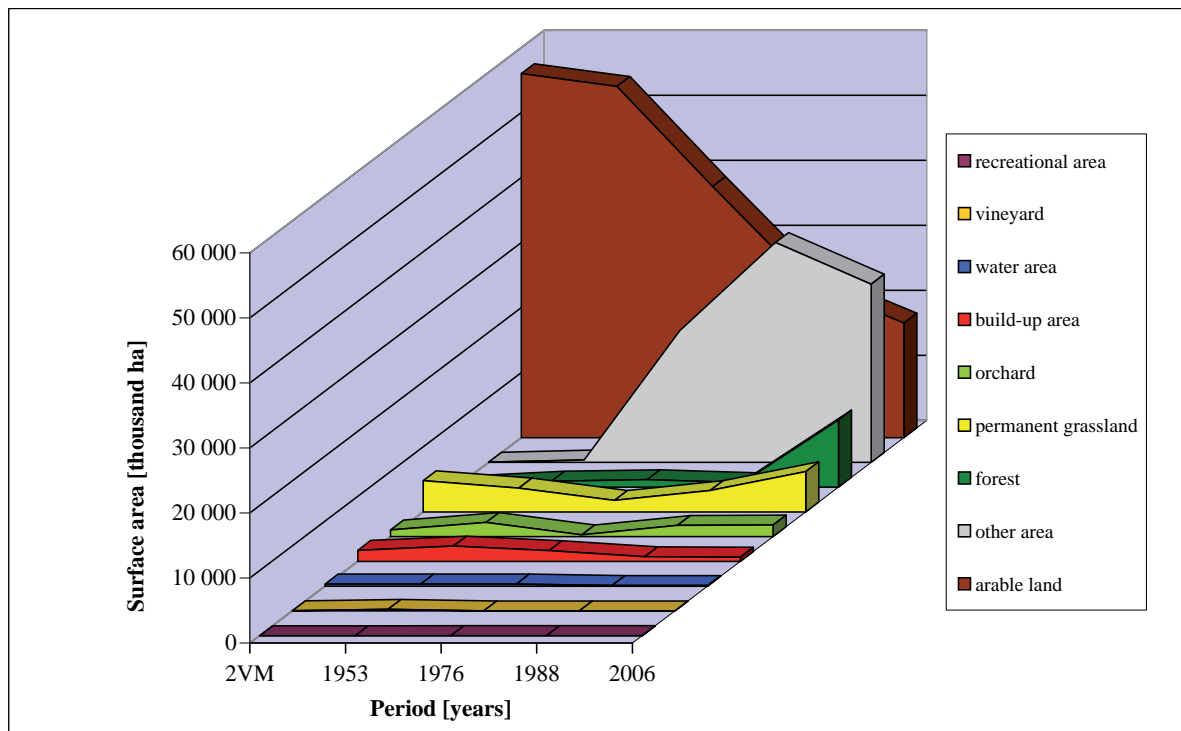


Fig. 4 Land-use development in the locality of Doly Nástup Tušimice in the period from 1846–2006

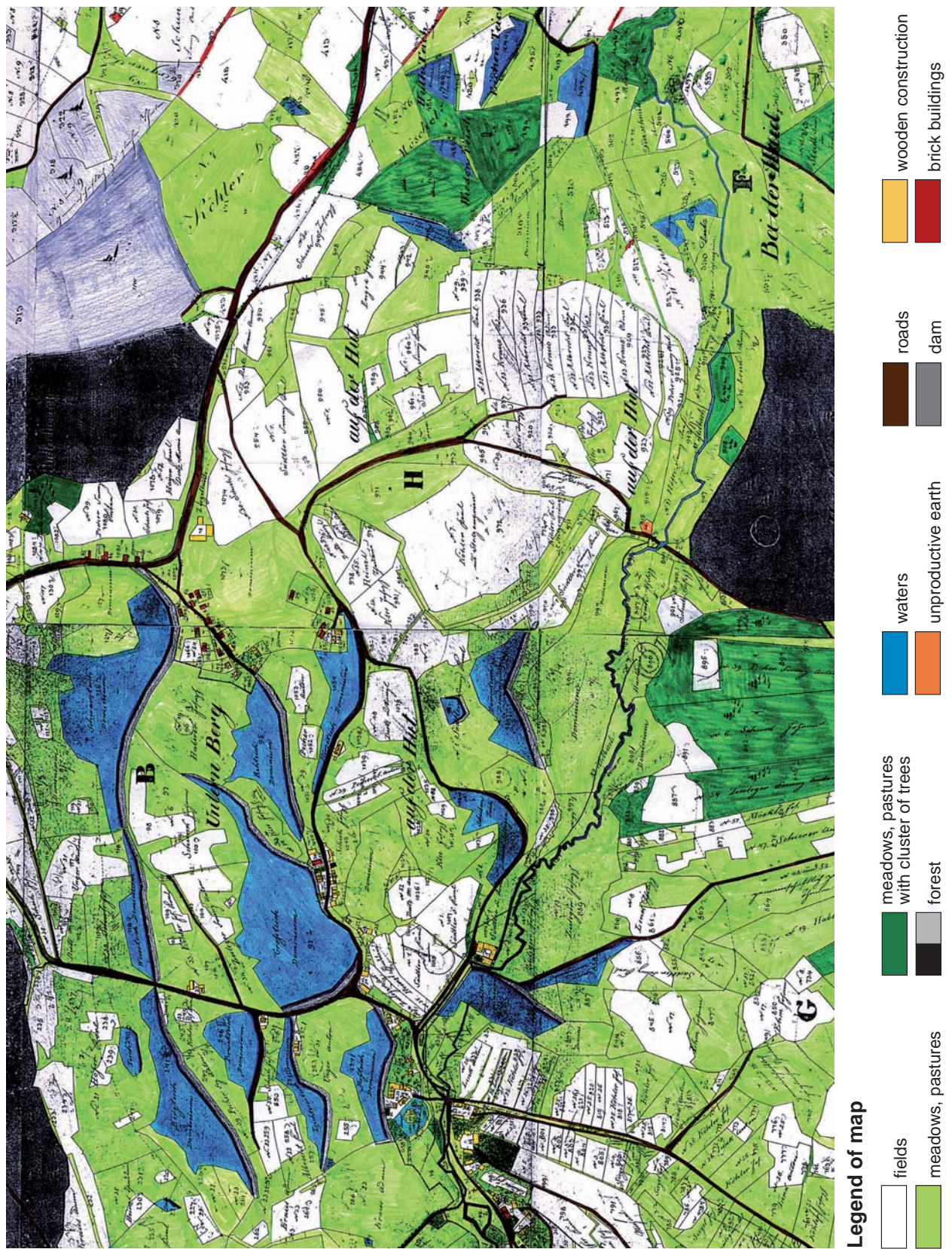


Fig. 7 Village Vřesová – historical cultural landscape with preserved pond systems and brook valley (the color copy of the indication sketch of the stable cadastre – 1842)

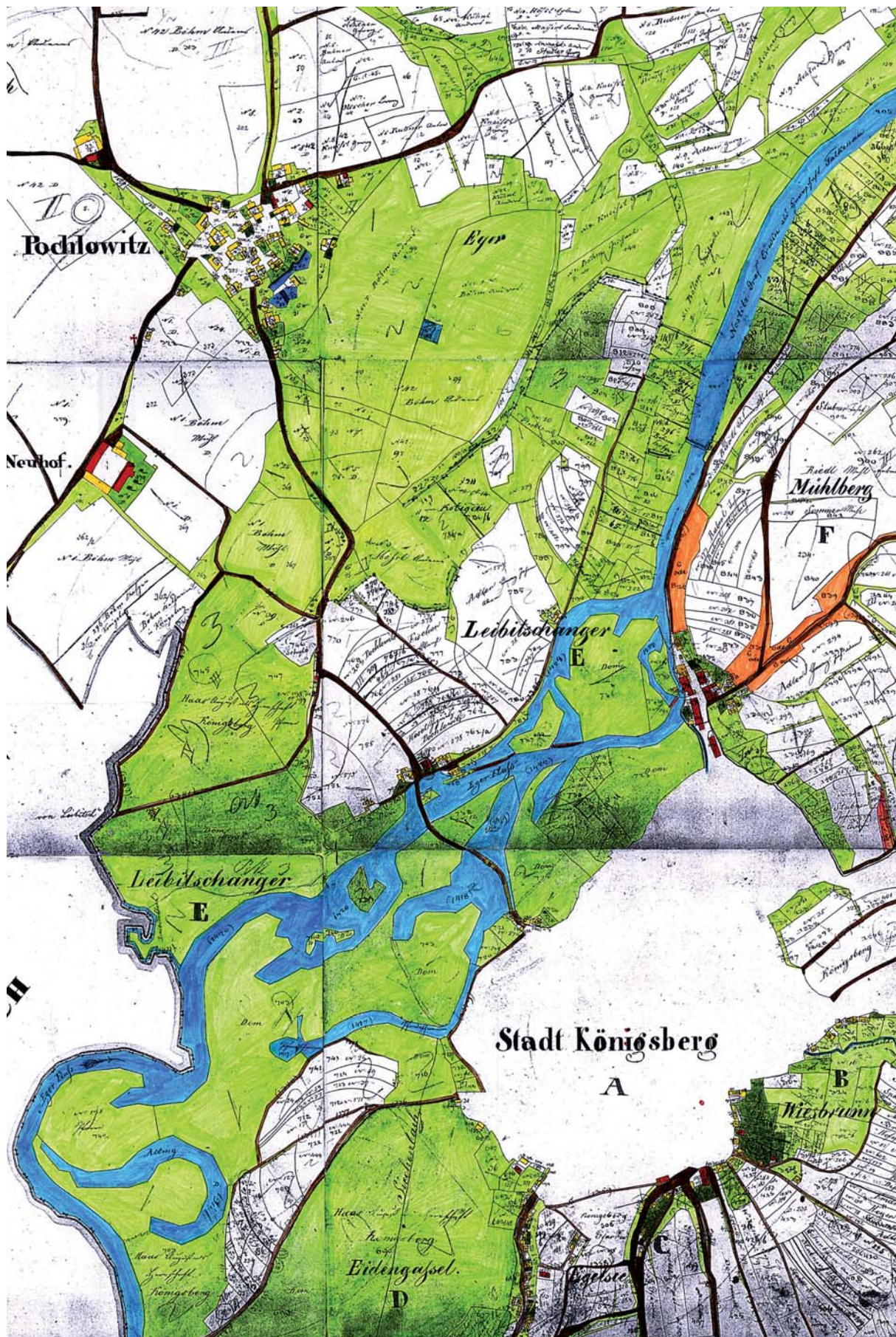


Fig. 8 Meanders and blind arms of the Ohře river by Kynšperk, cadastr with waters above 2 % and having a balanced proportion of crops (the color copy of the indication sketch of the stable cadastre – 1842)

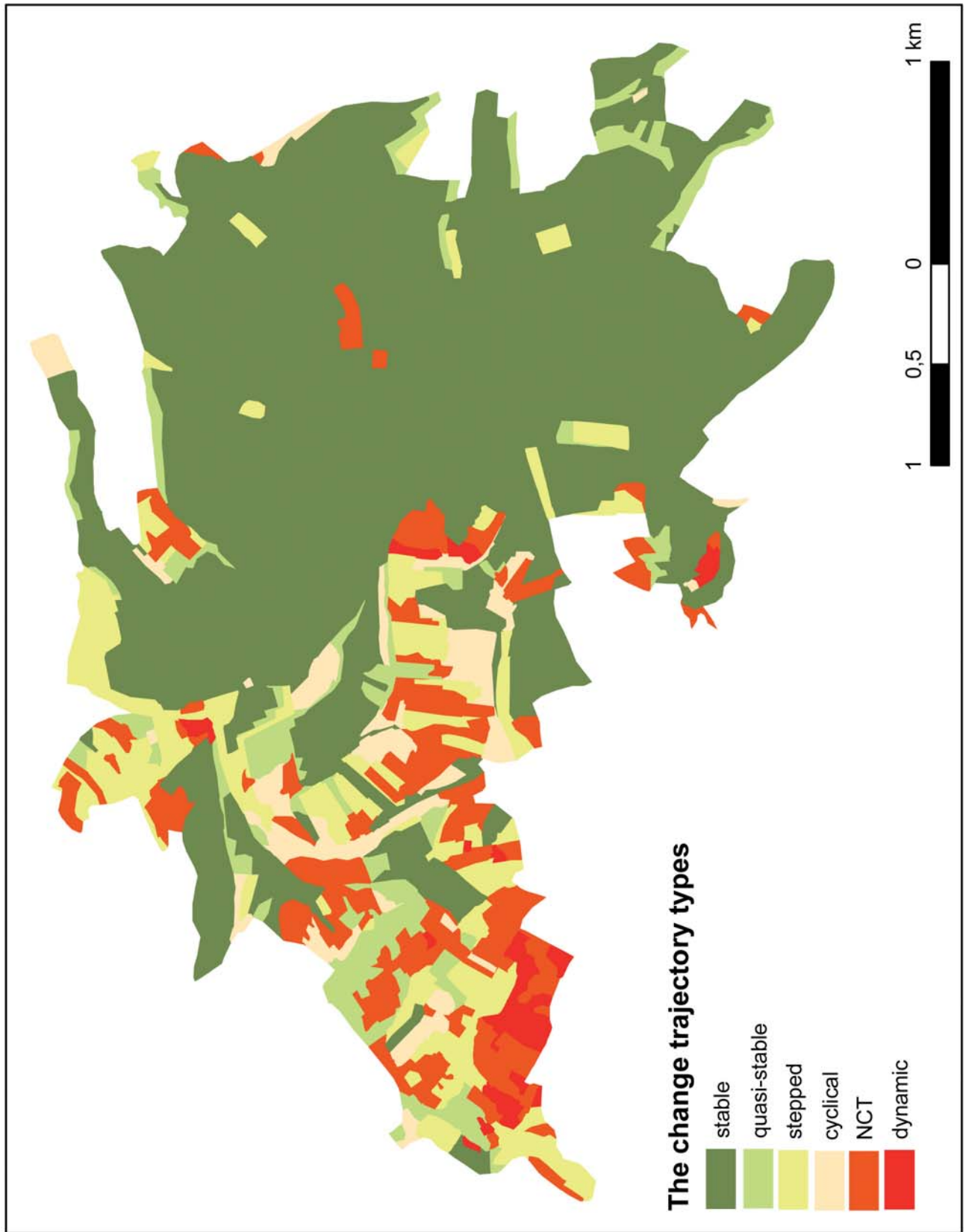


Fig. 2 Map of change trajectories

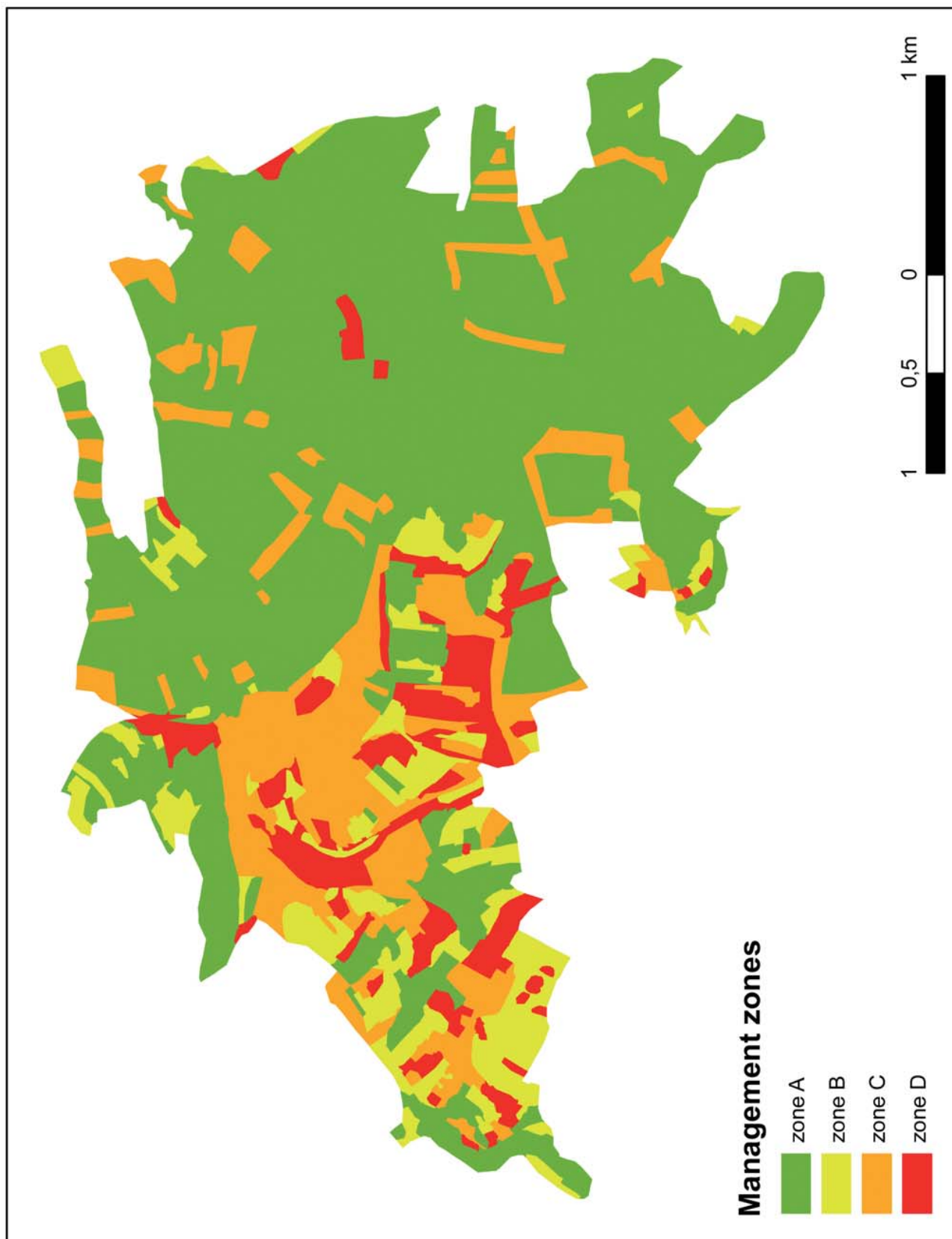


Fig. 3 Map of management zone



Fig. 4 Landscape mosaic of SRBC Přední Kout – zone B (the moderate management zone)



Fig. 5 Zone A (the maintenance management zone) – The Kamenný vrch Nature Reserve



Fig. 6 Near natural forest



Fig. 7 Zone C – Arable land in the surrounding of SRBC Přední Kout

Land-use in municipalities with extended competence Kuřim in the period of the 2nd military mapping (1838)

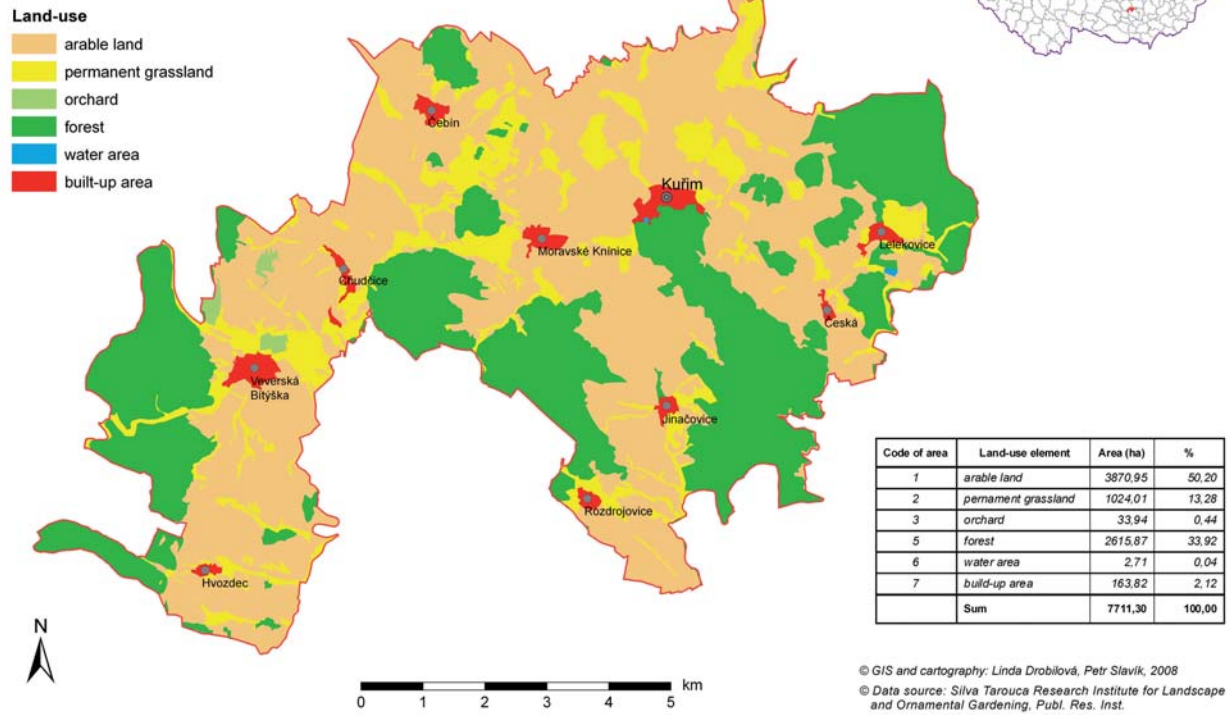


Fig. 1 Land-use in municipalities with extended competence Kuřim in the period of the 2nd military mapping (1838)

Land-use changes in municipalities with extended competence Kuřim (1838–2005)

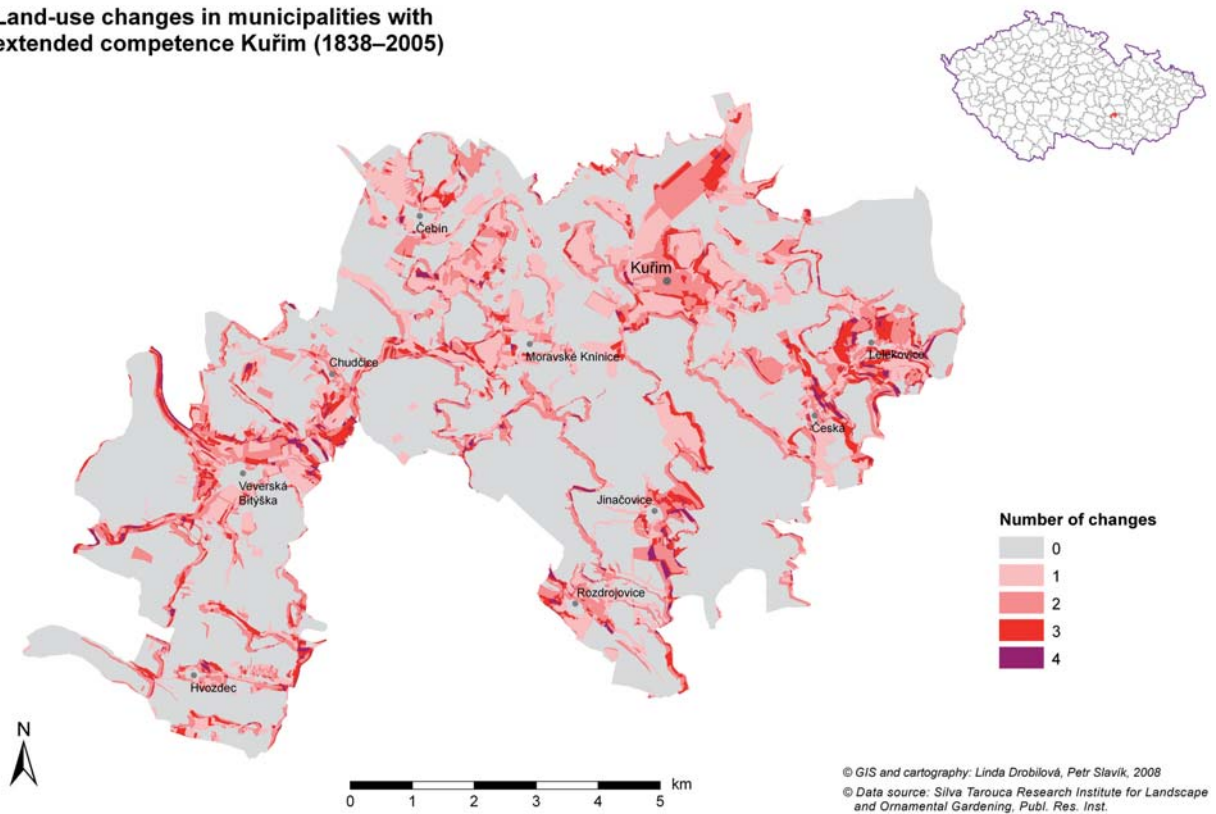


Fig. 2 Land-use changes in municipalities with extended competence Kuřim (1838–2005)

Conditions and functionality of selected ecologically significant in municipalities with extended competence Kuřim

- 1 Čebínka–Hrbatá
- 2 Čihadlo
- 3 Dálky
- 4 Hájek
- 5 Hvozdecká vápenice
- 6 Chudčický háj
- 7 Kuřimský vrch
- 8 Malý kopec
- 9 Mozy
- 10 Opálenka
- 11 Pod Babím lomem
- 12 Podleší
- 13 Rybníček v oboře
- 14 Strachovské strže
- 15 Svratka
- 16 Zlobice

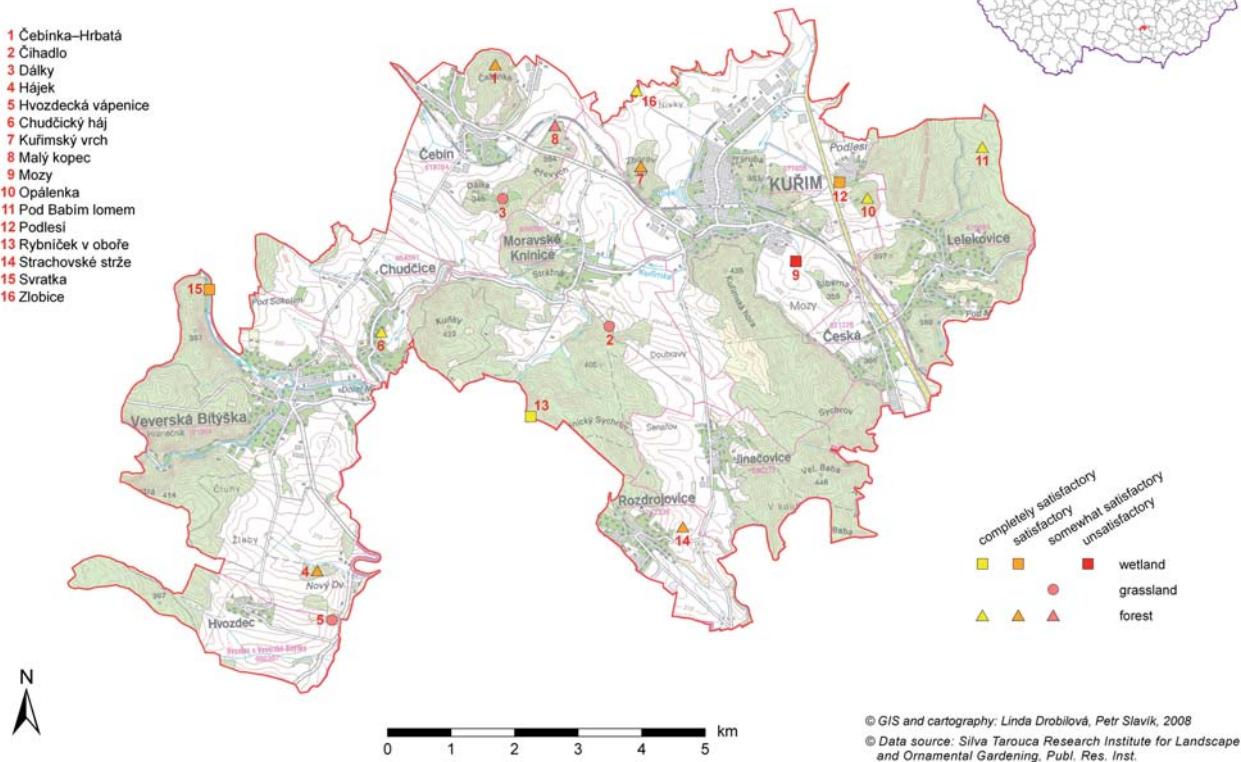


Fig. 3 Conditions and functionality of selected ecologically...

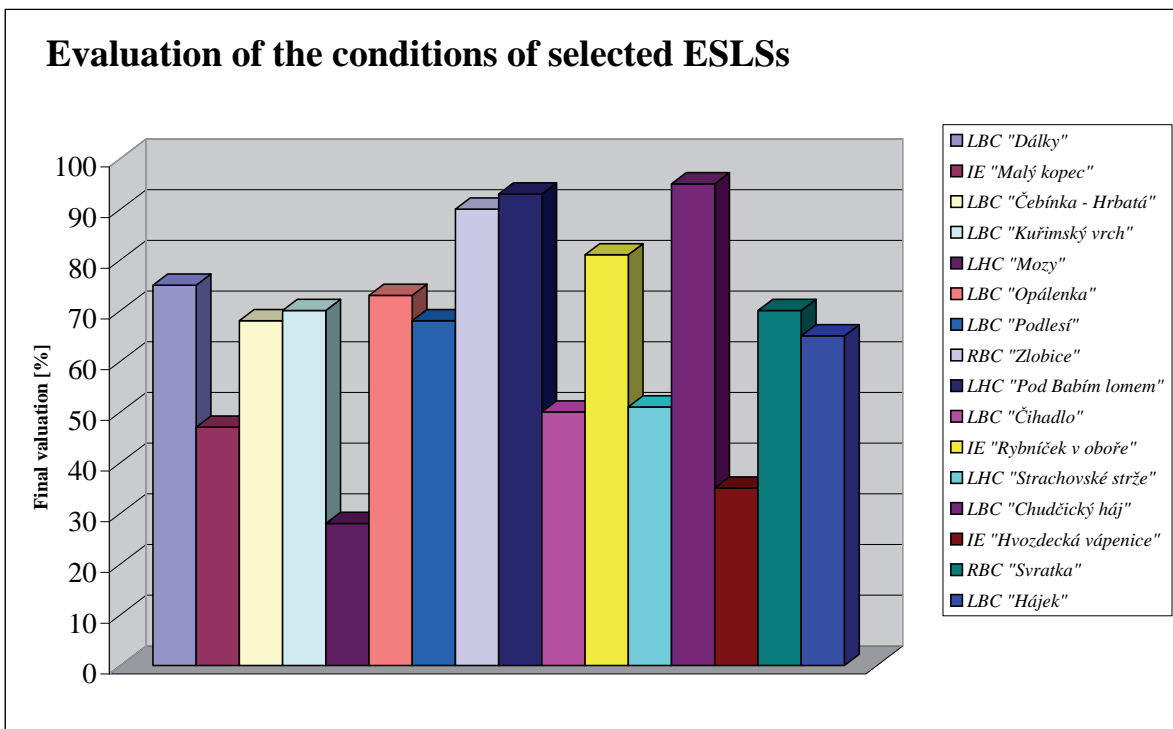


Fig. 4 Evaluation of the conditions of selected ESLs



Fig. 5 Ecological relatively stable areas in 1839 and 2006

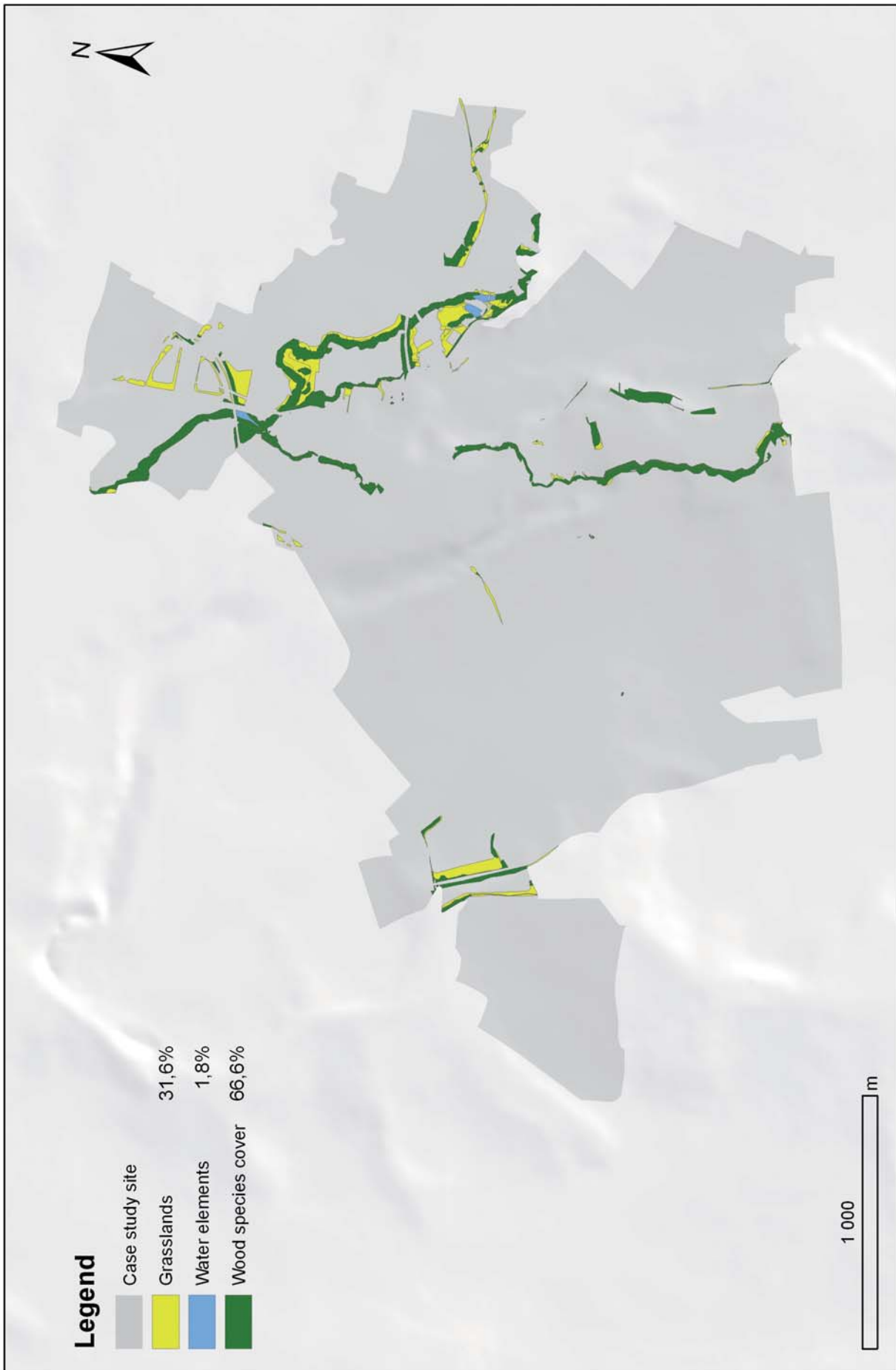


Fig. 6 Land cover of segments of historical stable segments

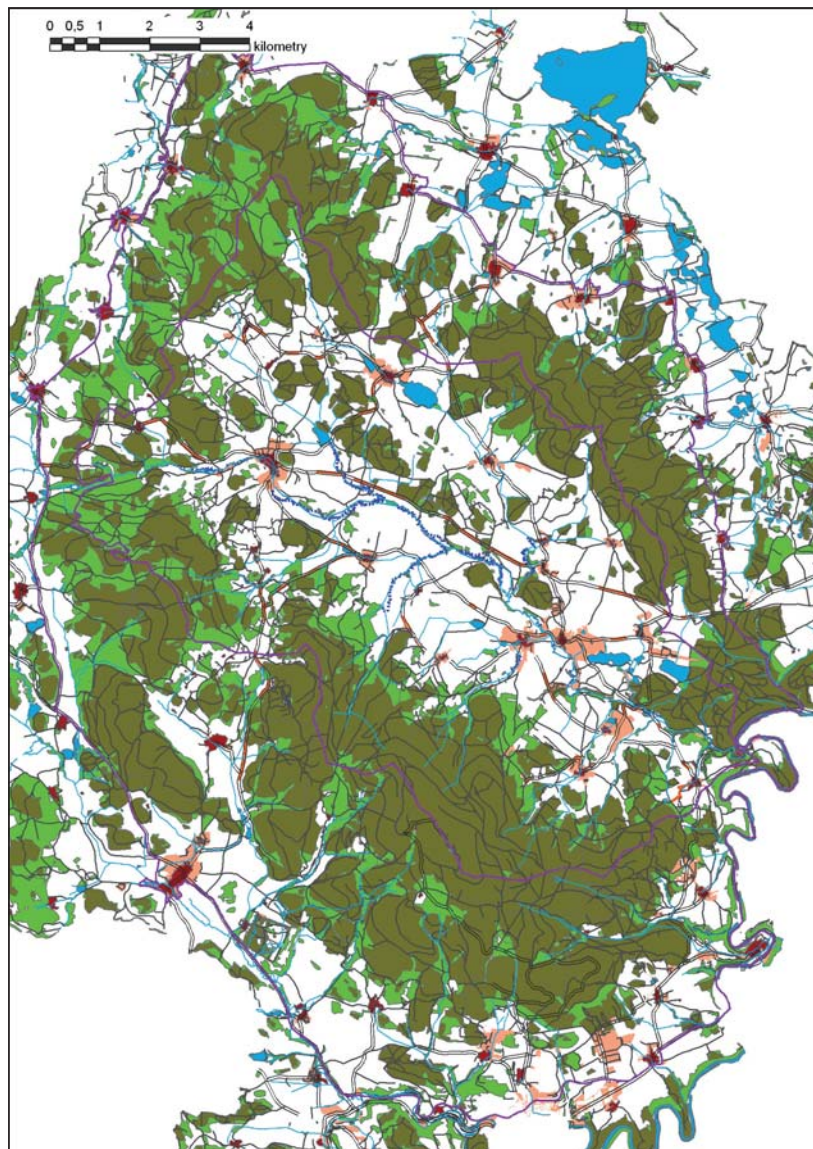


Fig. 1 Stable cadastre landuse change projection to the basic map over all view, Storm, 2008)

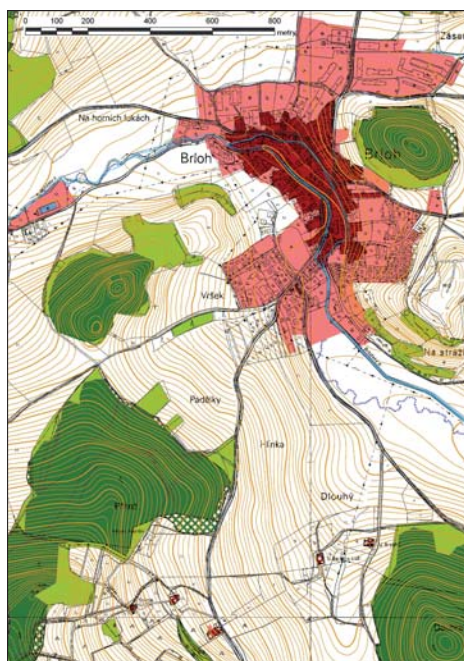


Fig. 2 Stable cadastre selected elements projection to the basic map (1 : 10 000, detail section Storm, 2008)

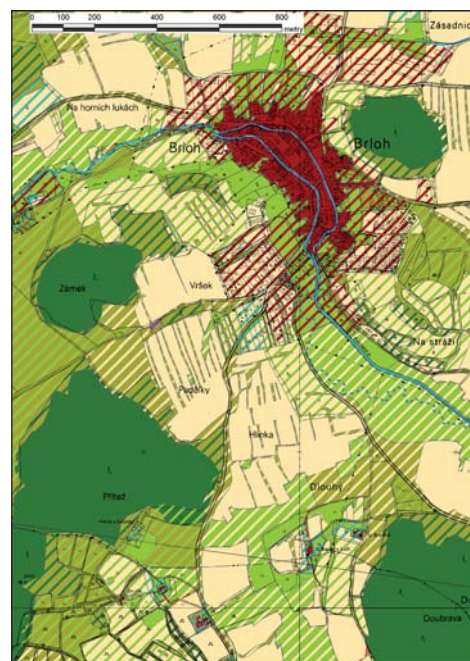


Fig. 3 Stable cadastre landuse projection to the basic map (1 : 10 000, detail section Storm, 2008)

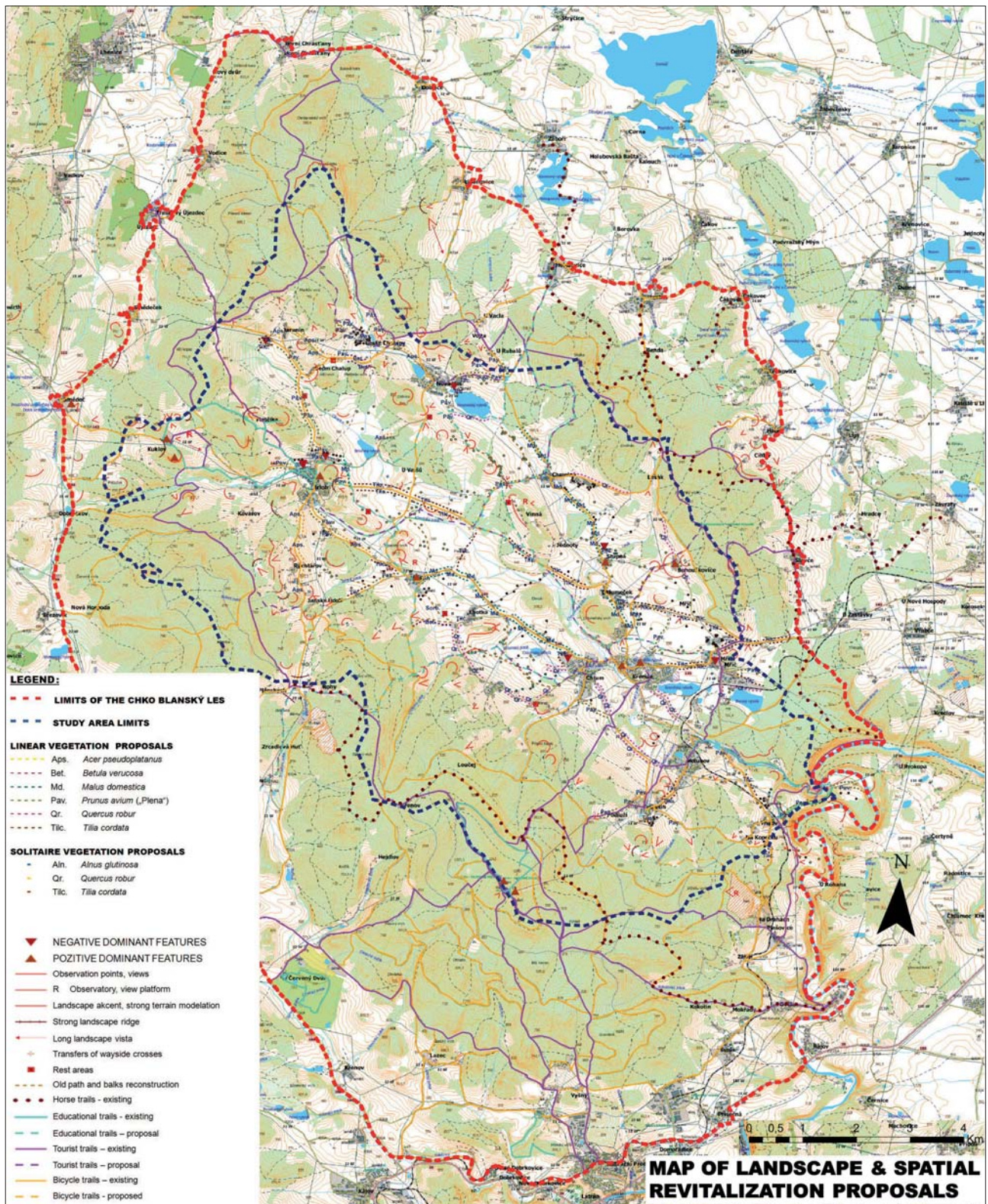


Fig. 4 Map of the Landscape Spatial Structure Reformation Proposals (1 : 25 000, downsized overall view, resp. detail. Hendrych, Hronovská, 2008)

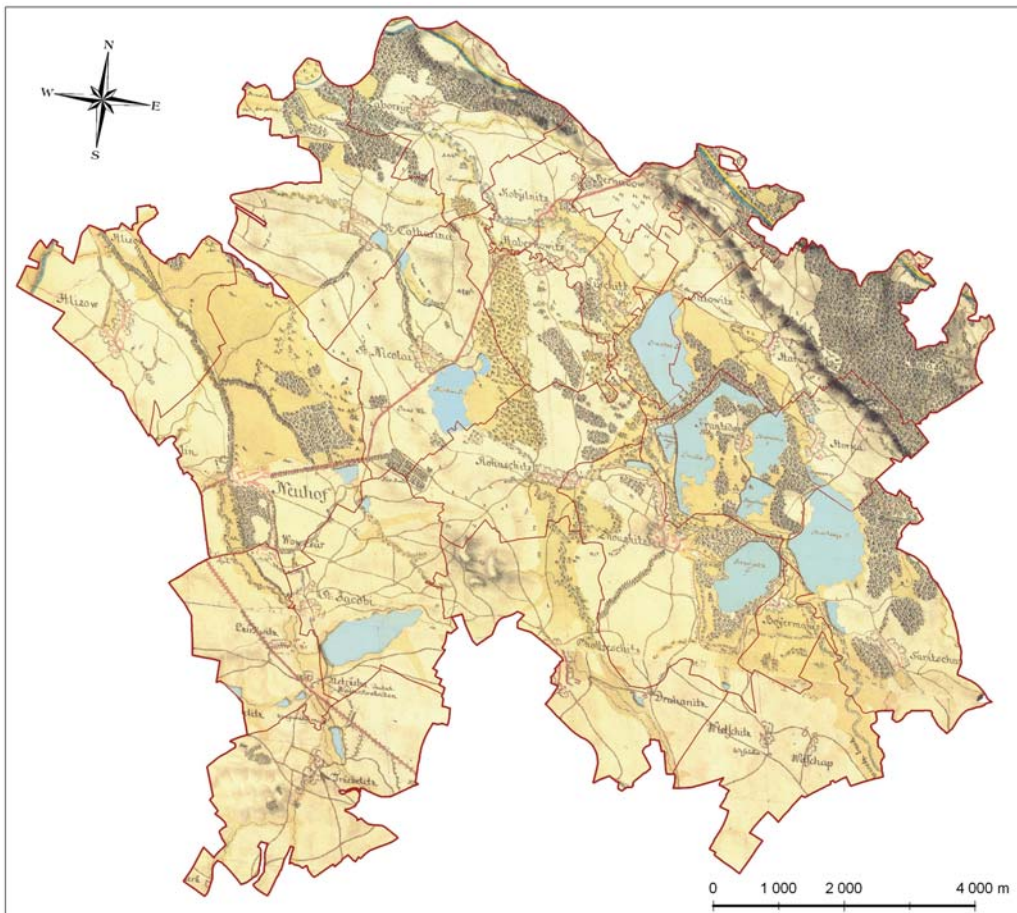


Fig. 6 1st Military Survey (1764–1768, 1780–1783)

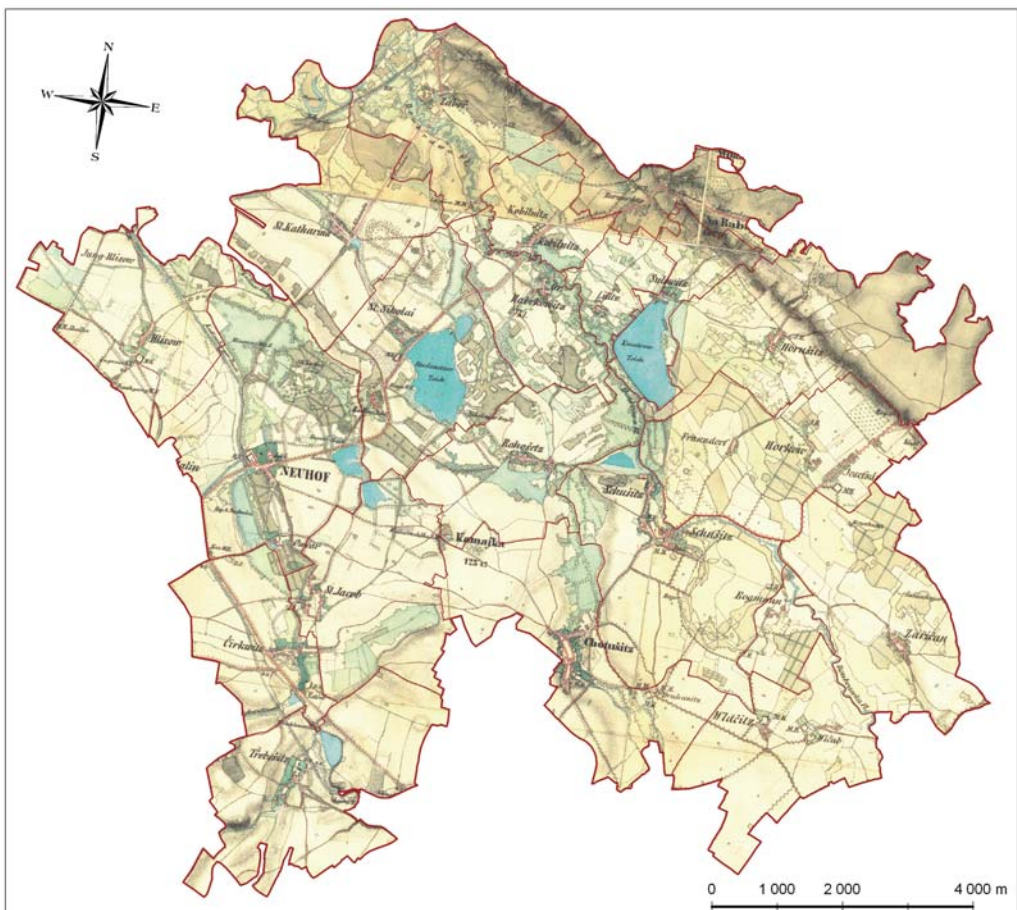


Fig. 7 2nd Military Survey (1836–1852)

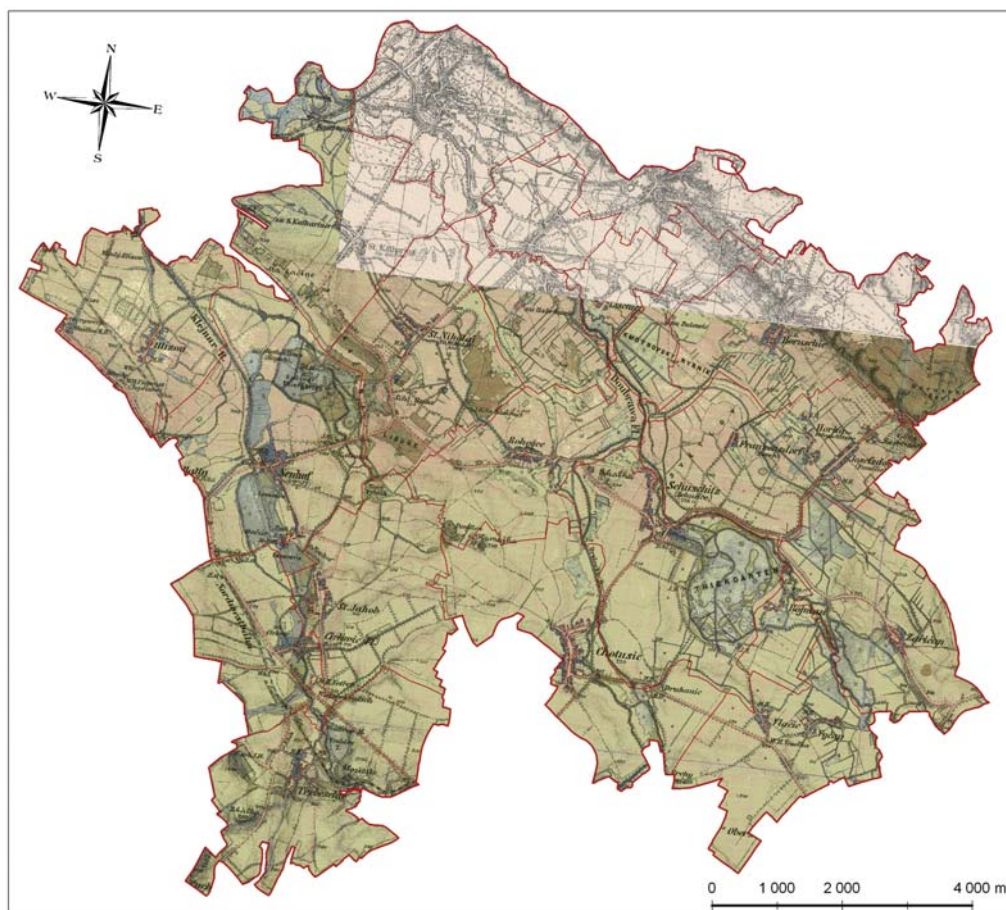


Fig. 8 3rd Military Survey (1877–1880)

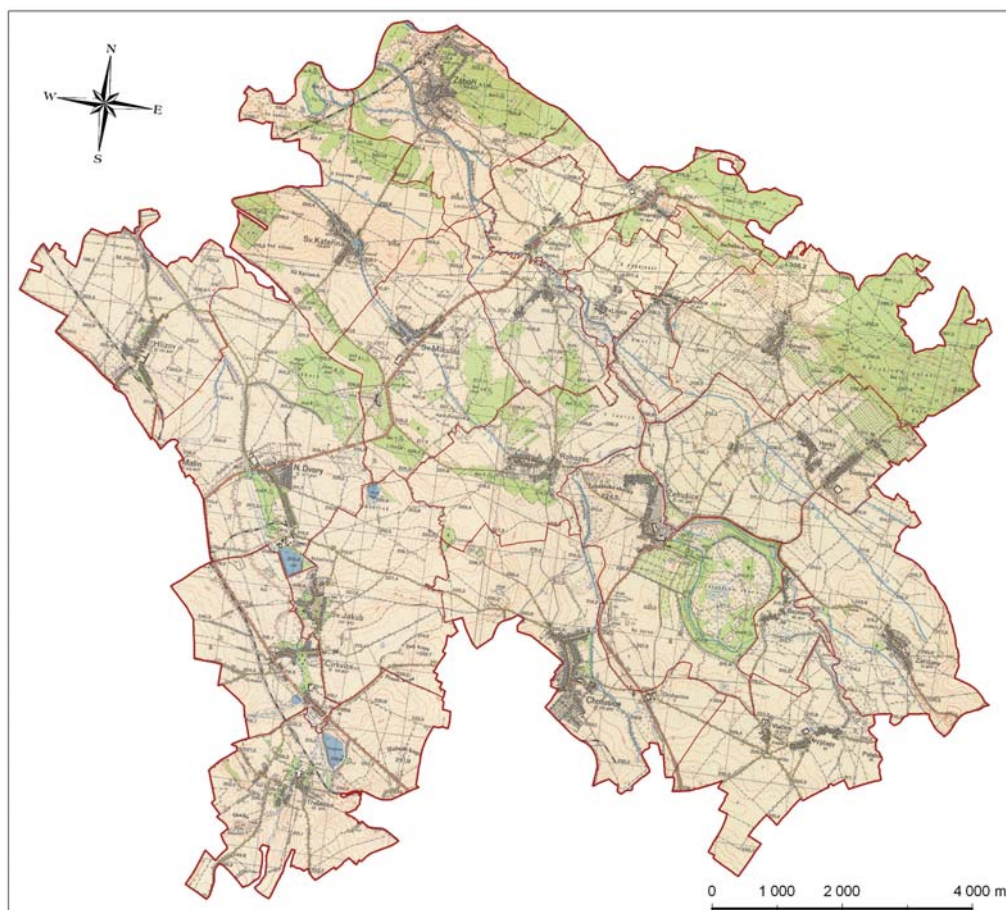


Fig. 9 Topography map of the General staff (1953)